

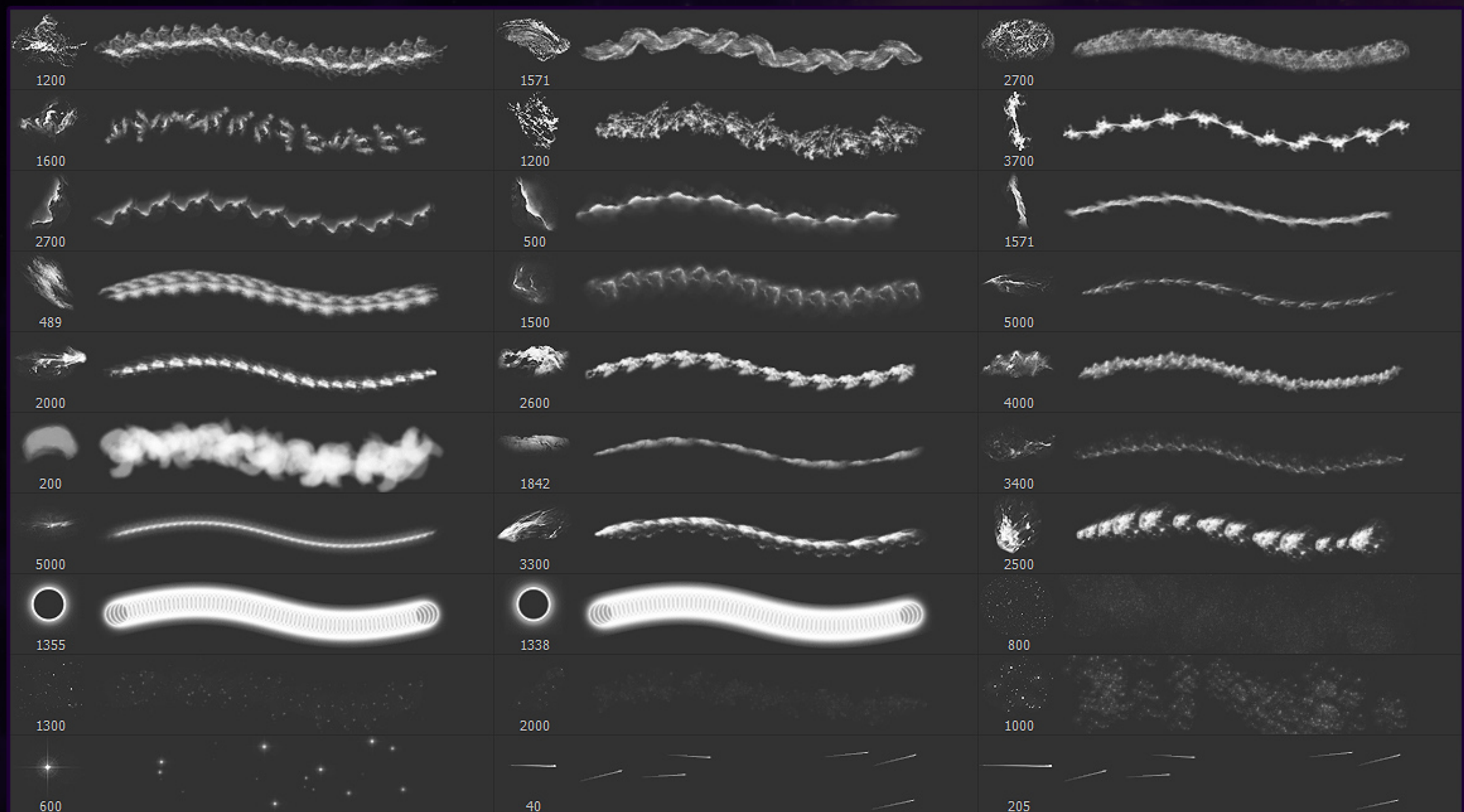
SPACE BRUSHES I: short guide & tutorials



As Antoine de Saint-Exupéry said:
«Every person has his own stars». (c)

CHAPTER 1

BRUSHES

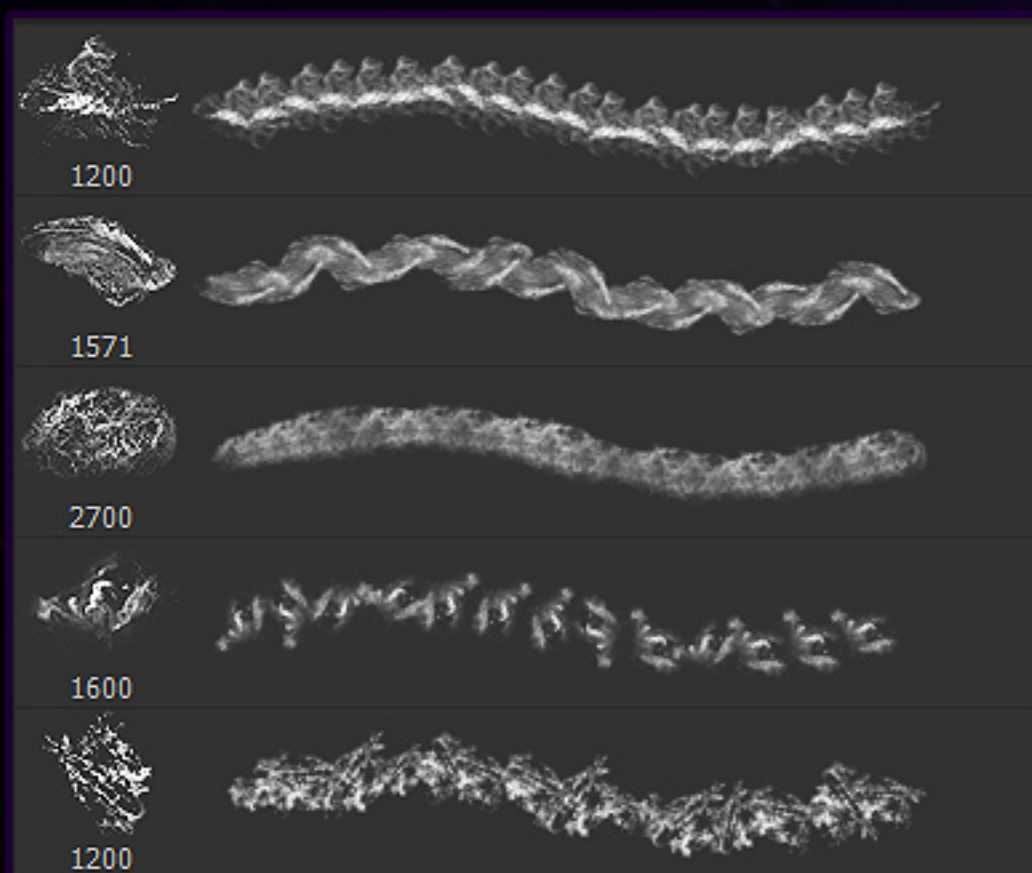


30 SPACE BRUSHES INCLUDE:

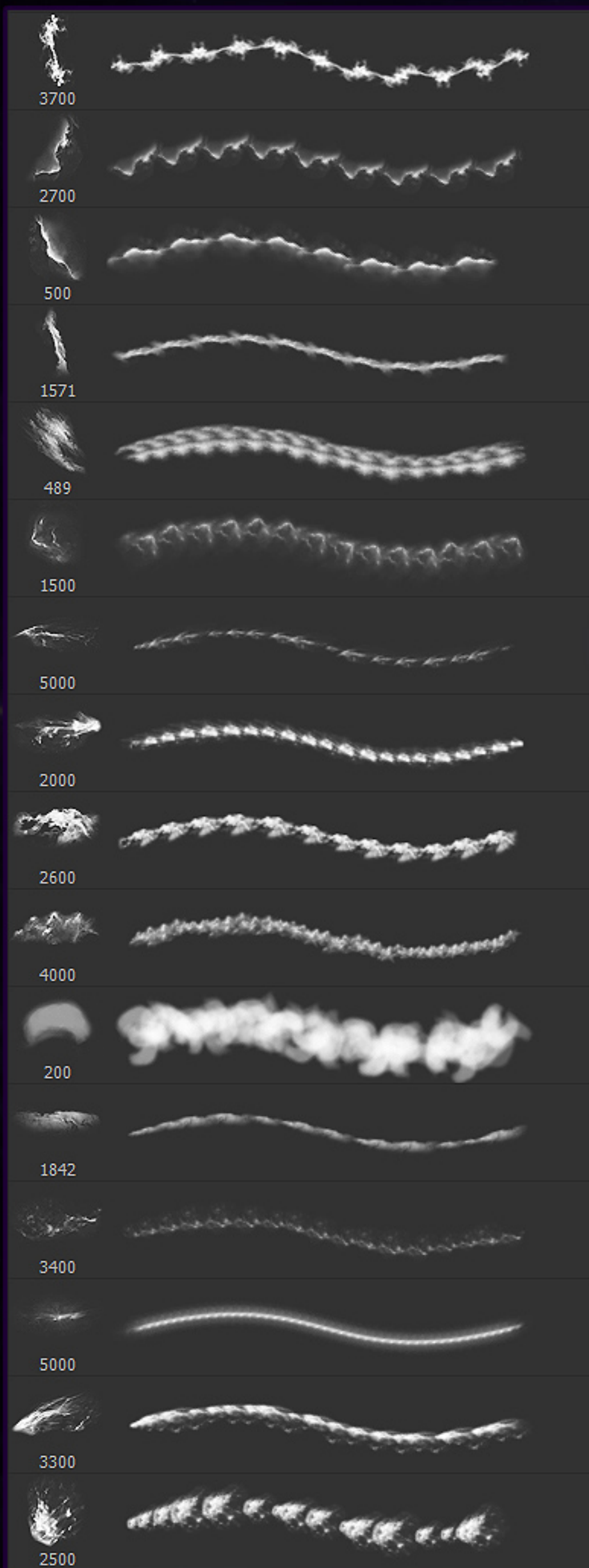
- NEBULA BRUSHES
- NEBULA DETAILS BRUSHES
- WORMHOLE\RINGS BRUSHES
- STAR BRUSHES
- FALLING STARS\METEORITES BRUSHES

SYSTEM REQUIREMENTS:

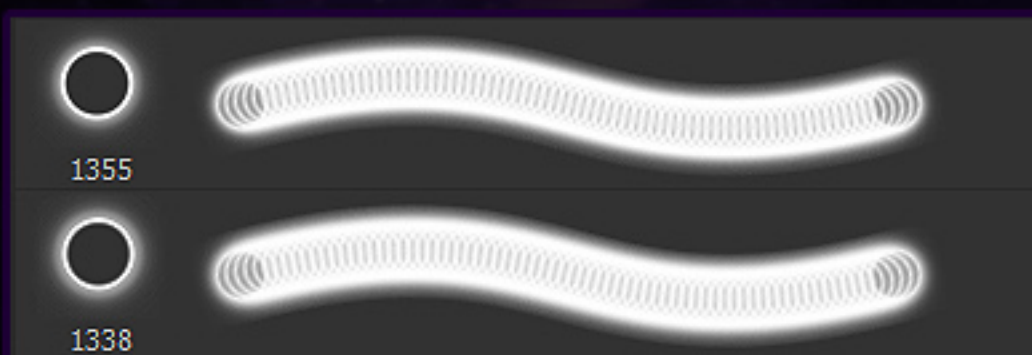
- ADOBE PHOTOSHOP



< NEBULA DETAILS



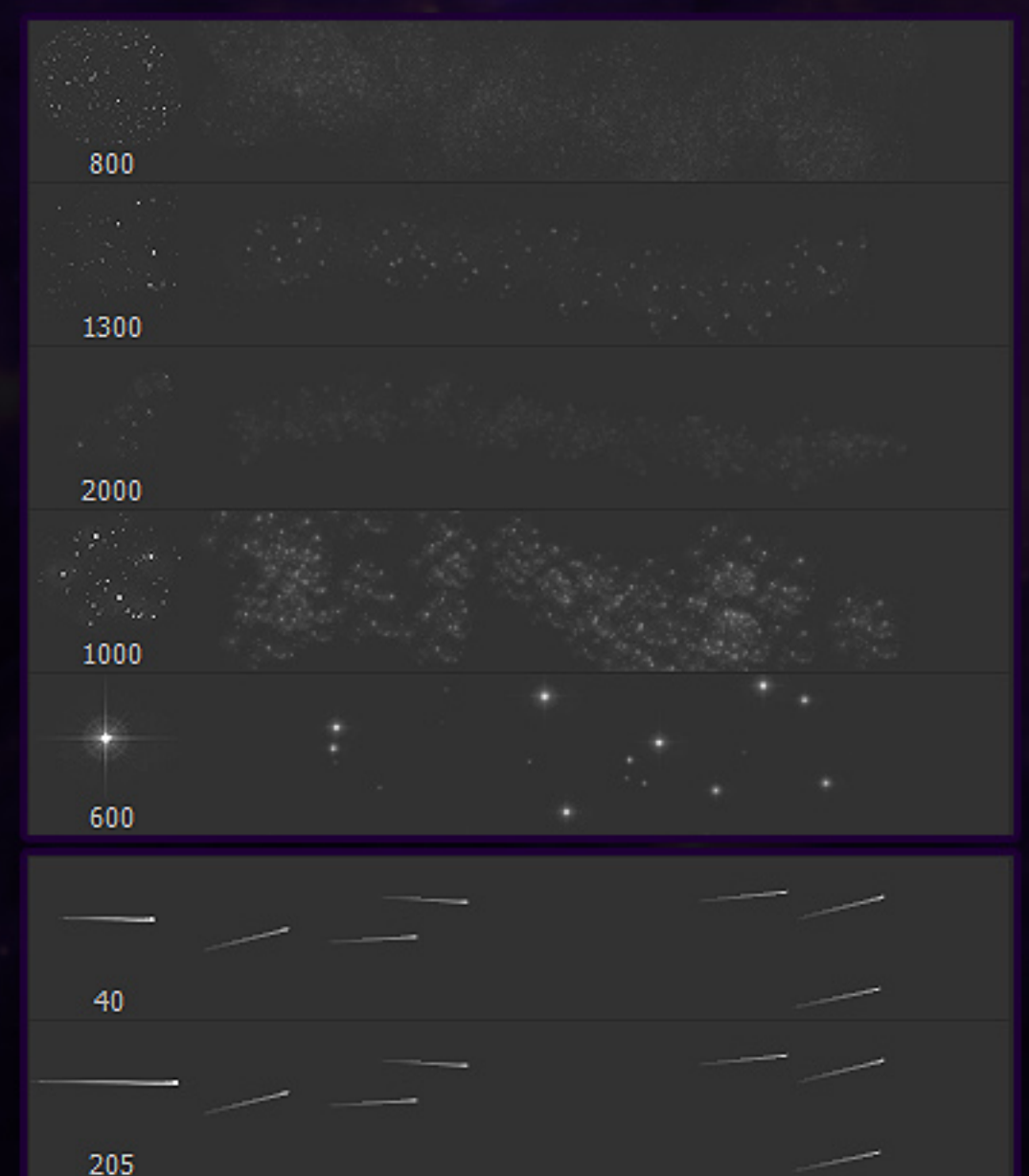
< NEBULA BRUSHES



WORMHOLE\RINGS BRUSHES

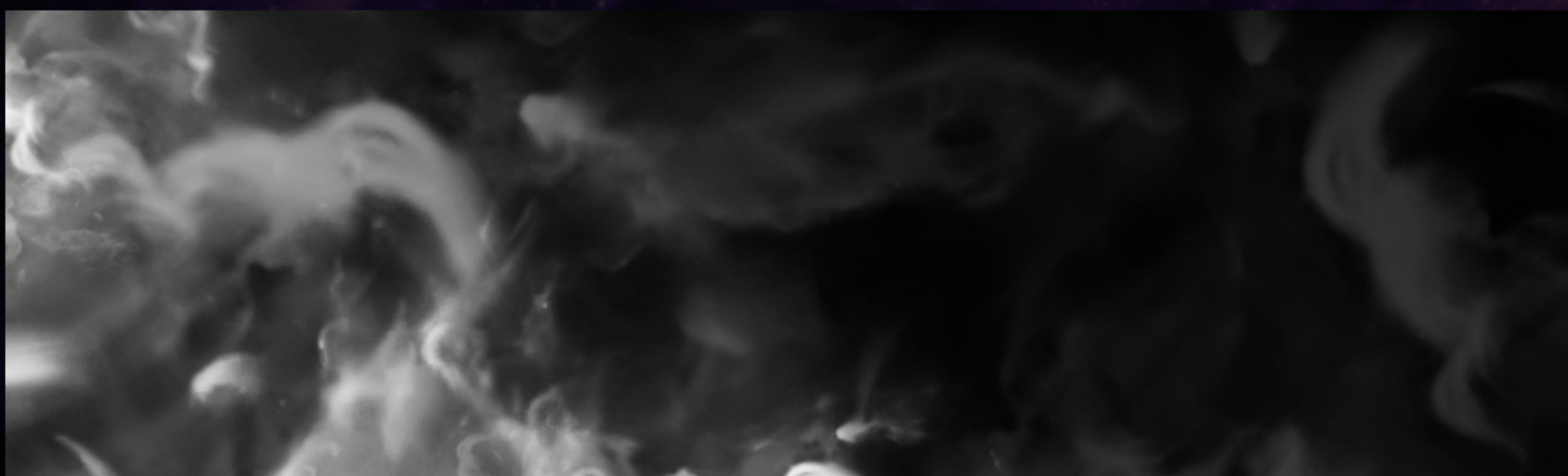
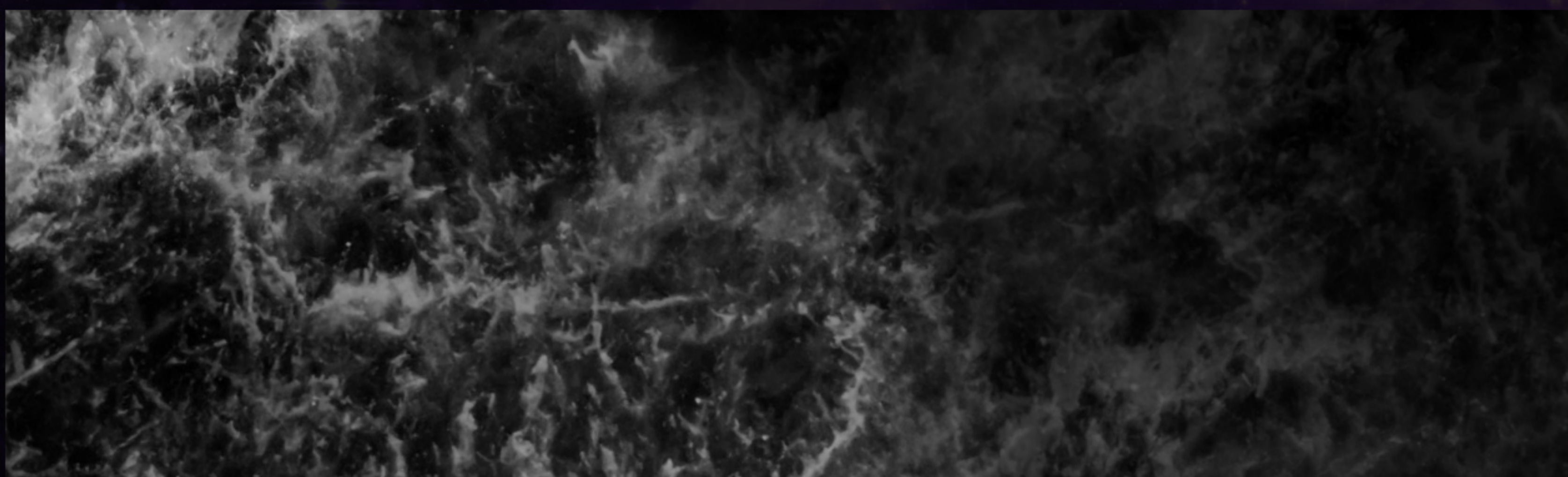
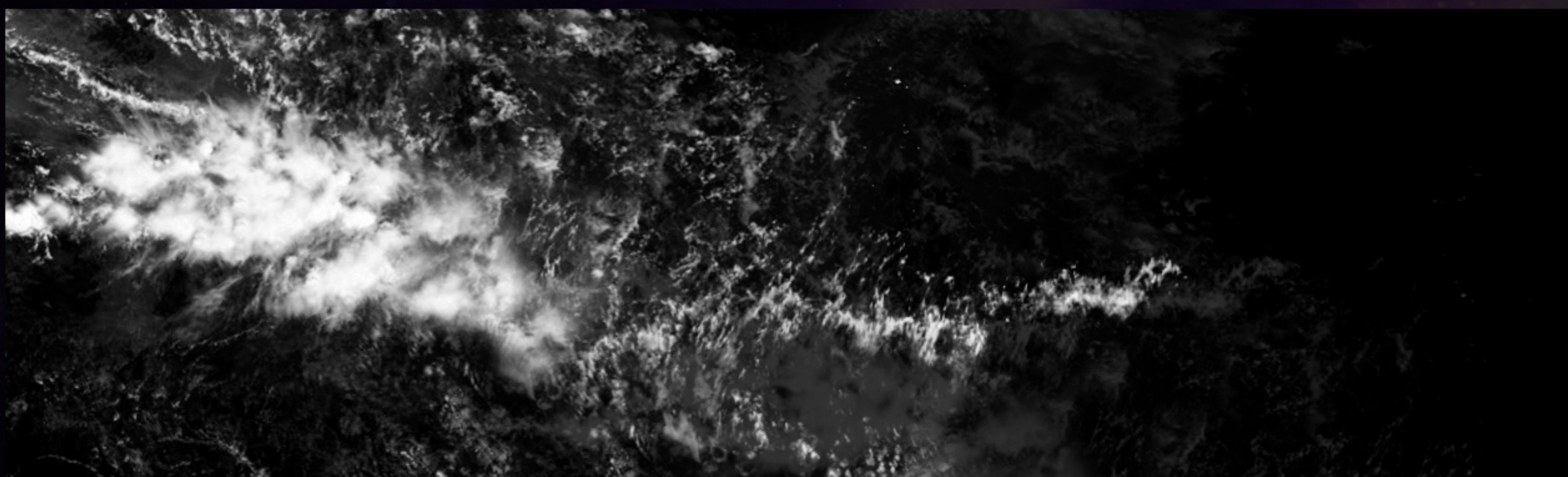
FALLING STARS\METEORITES BRUSHES >

STAR BRUSHES



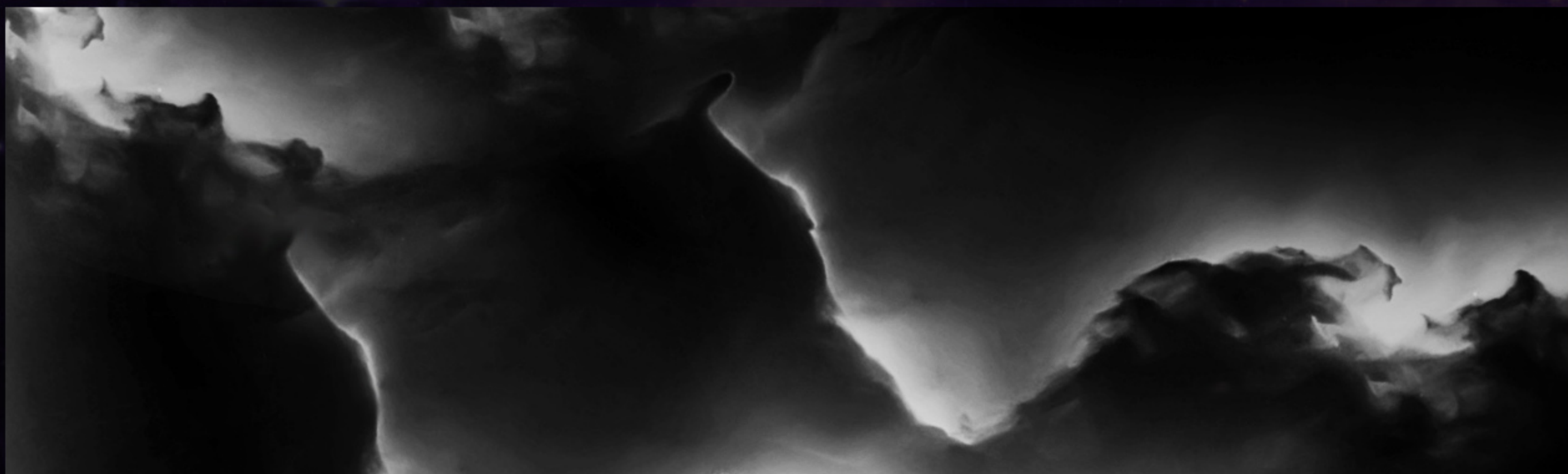
CHAPTER 2

EXAMPLES OF USING:



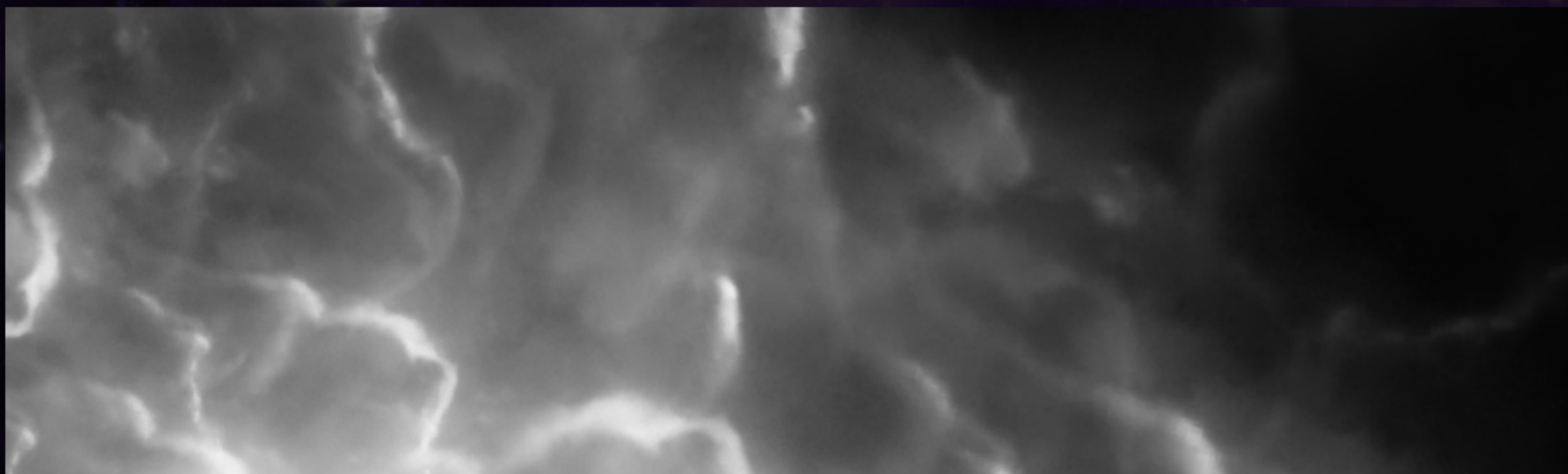
CHAPTER 2

EXAMPLES OF USING:



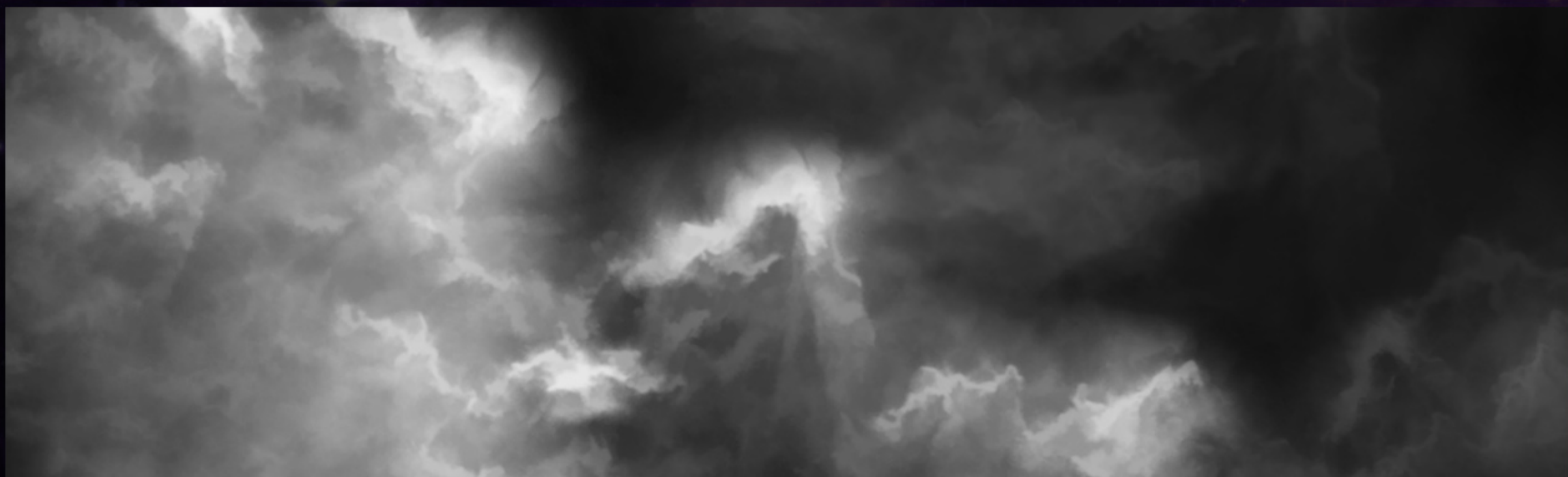
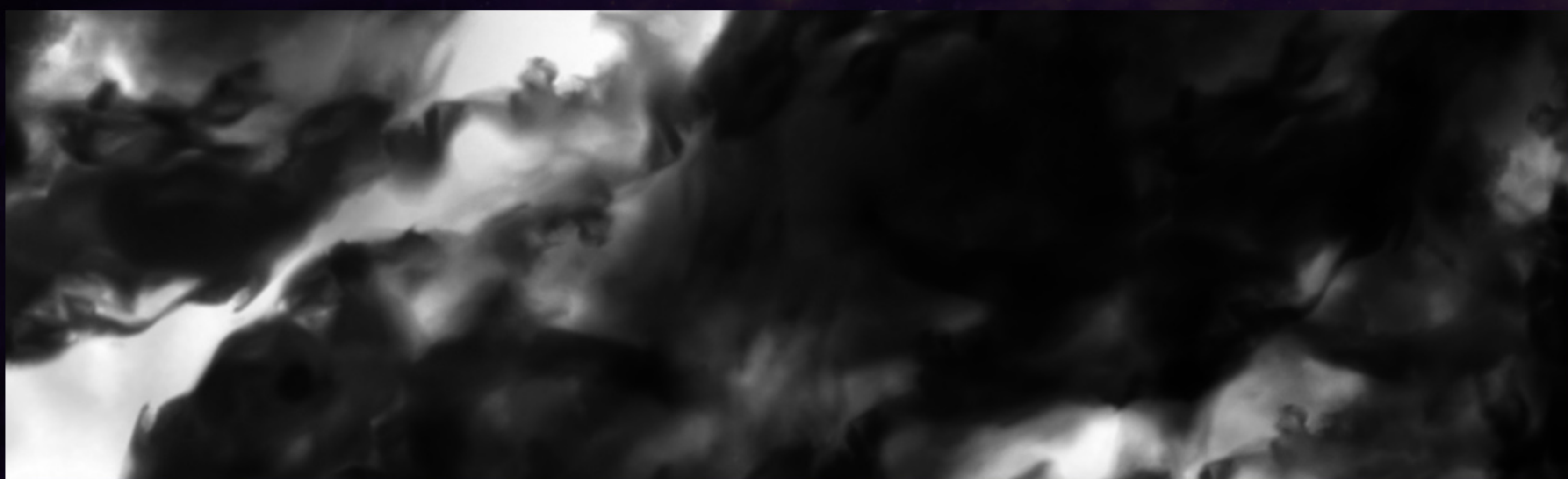
CHAPTER 2

EXAMPLES OF USING:



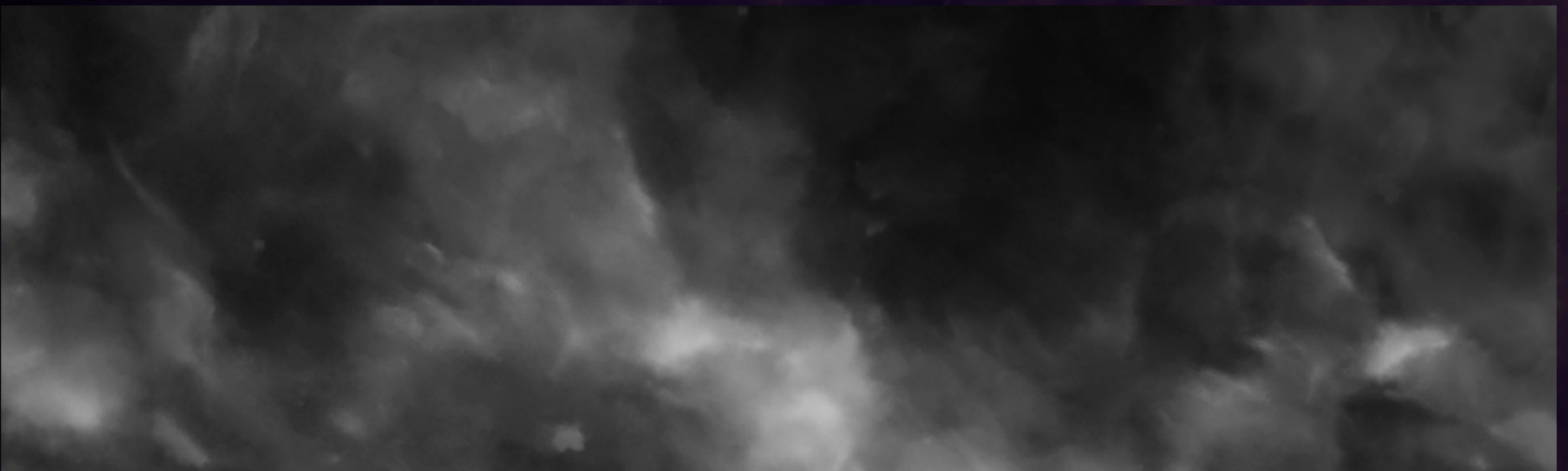
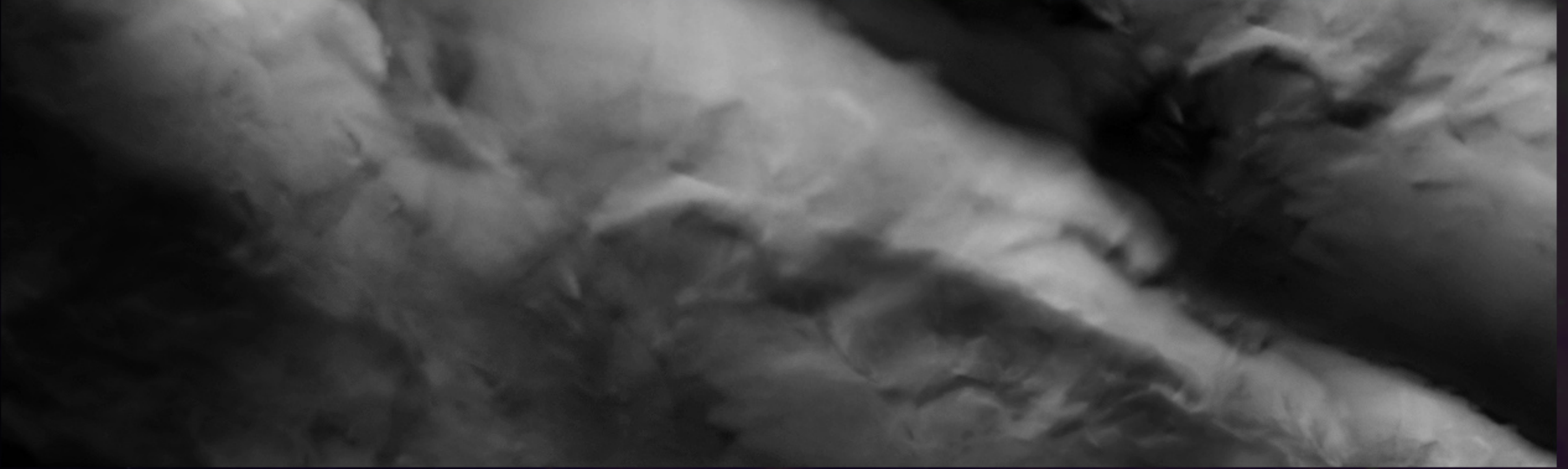
CHAPTER 2

EXAMPLES OF USING:



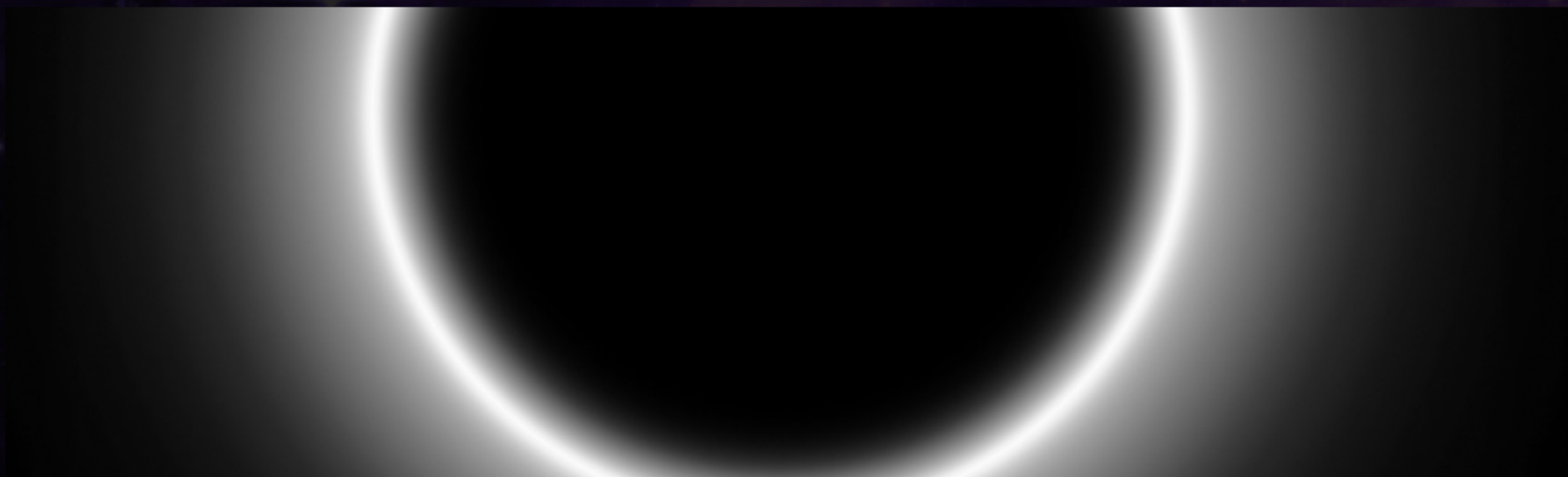
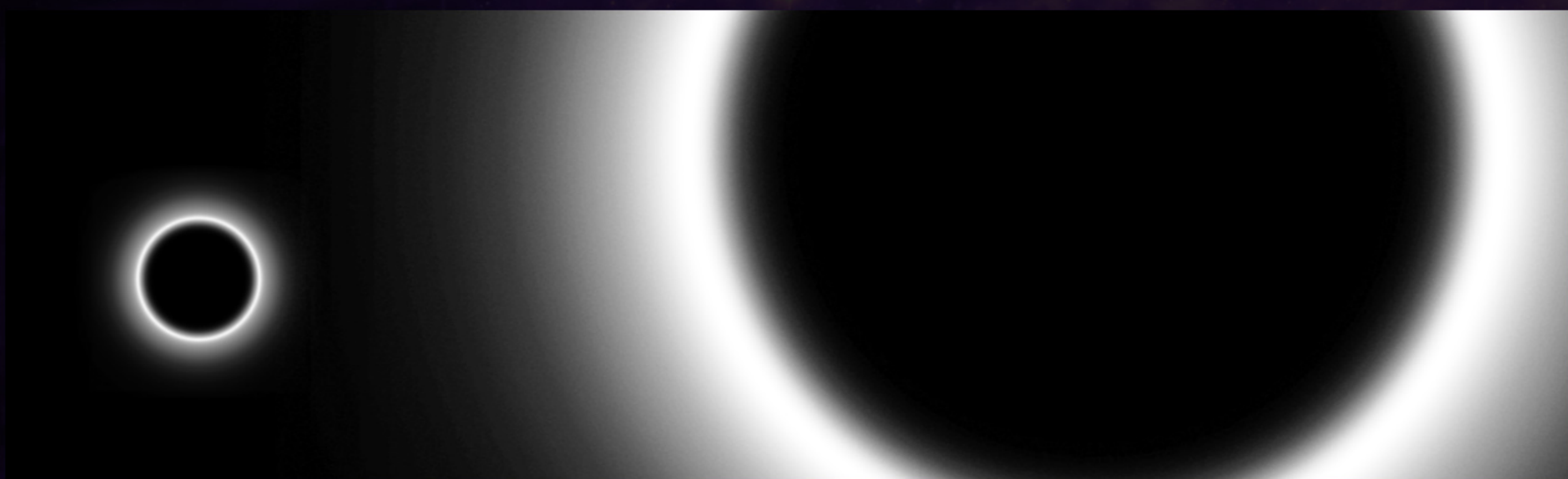
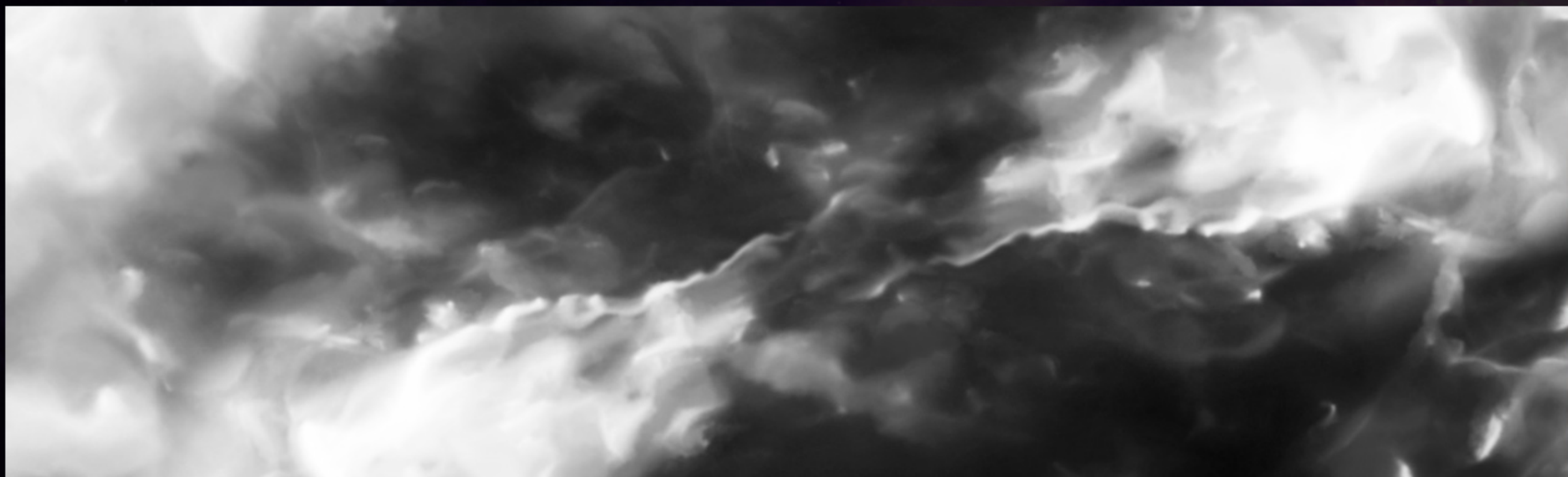
CHAPTER 2

EXAMPLES OF USING:



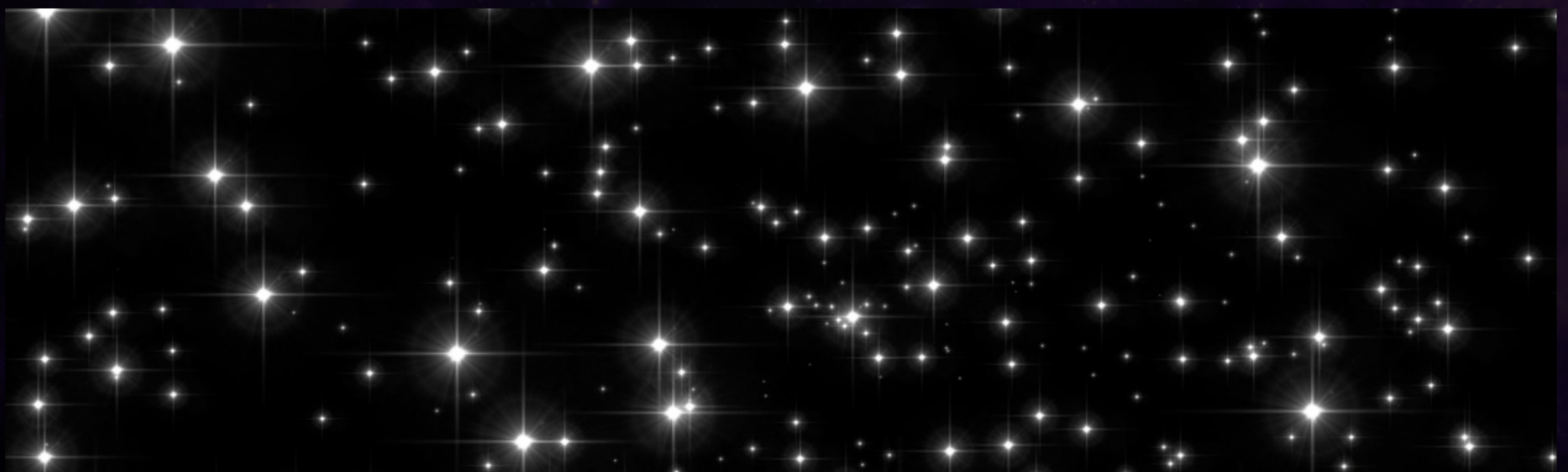
CHAPTER 2

EXAMPLES OF USING:



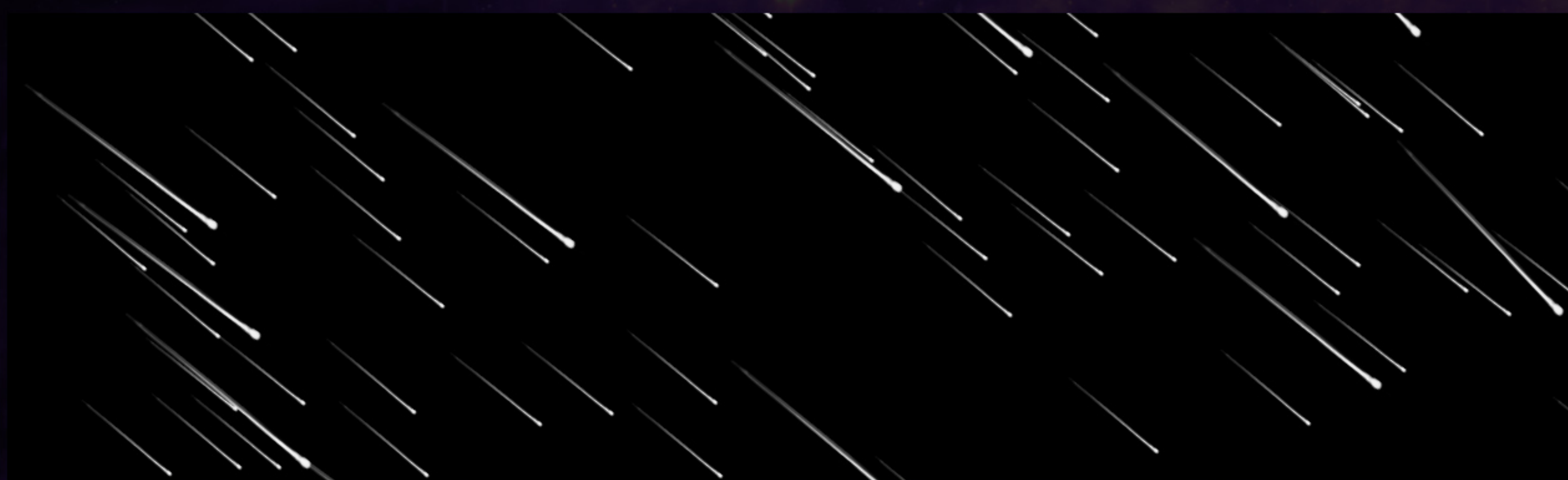
CHAPTER 2

EXAMPLES OF USING:



CHAPTER 2

EXAMPLES OF USING:

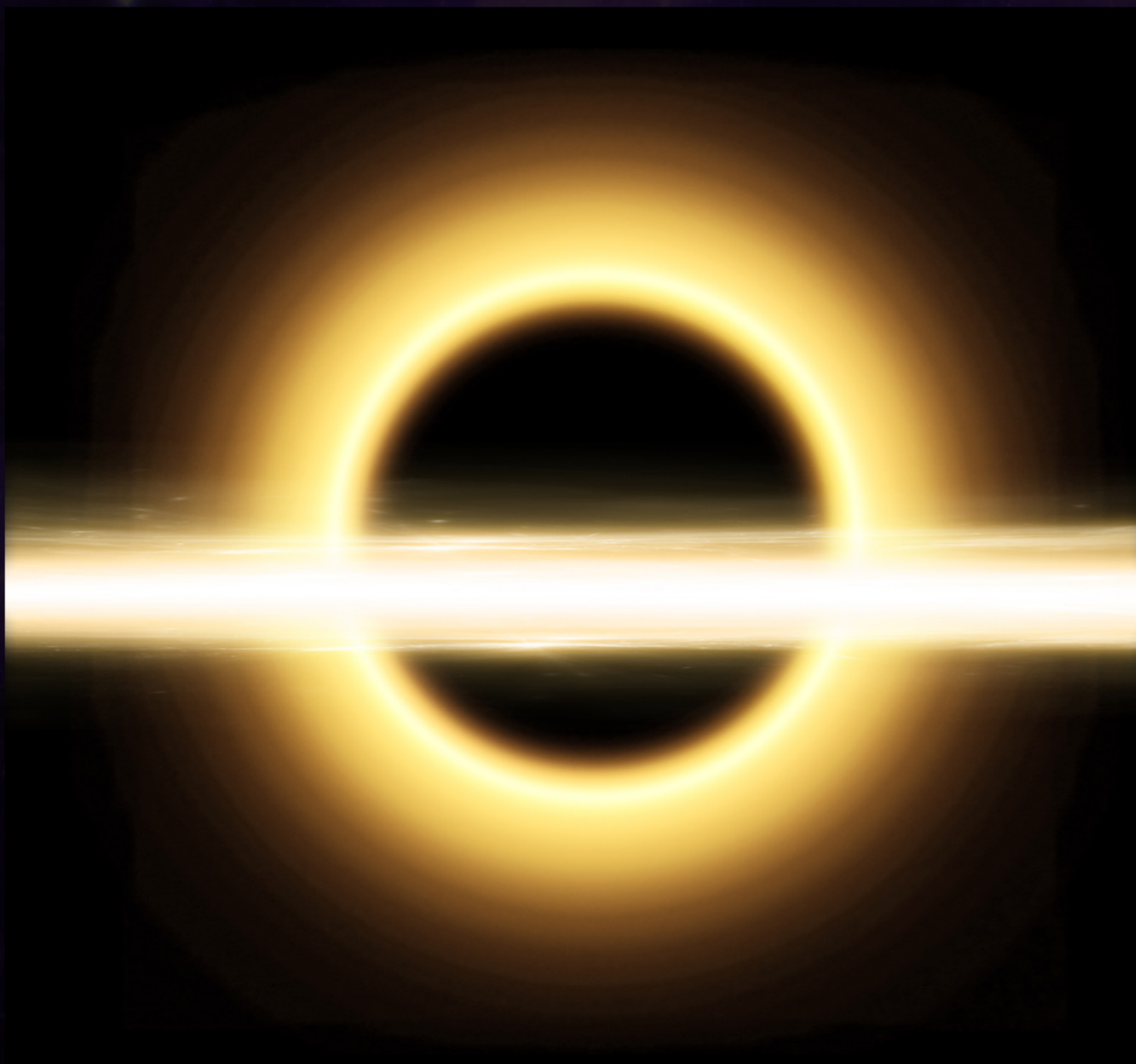


SPEEDPAINTS:



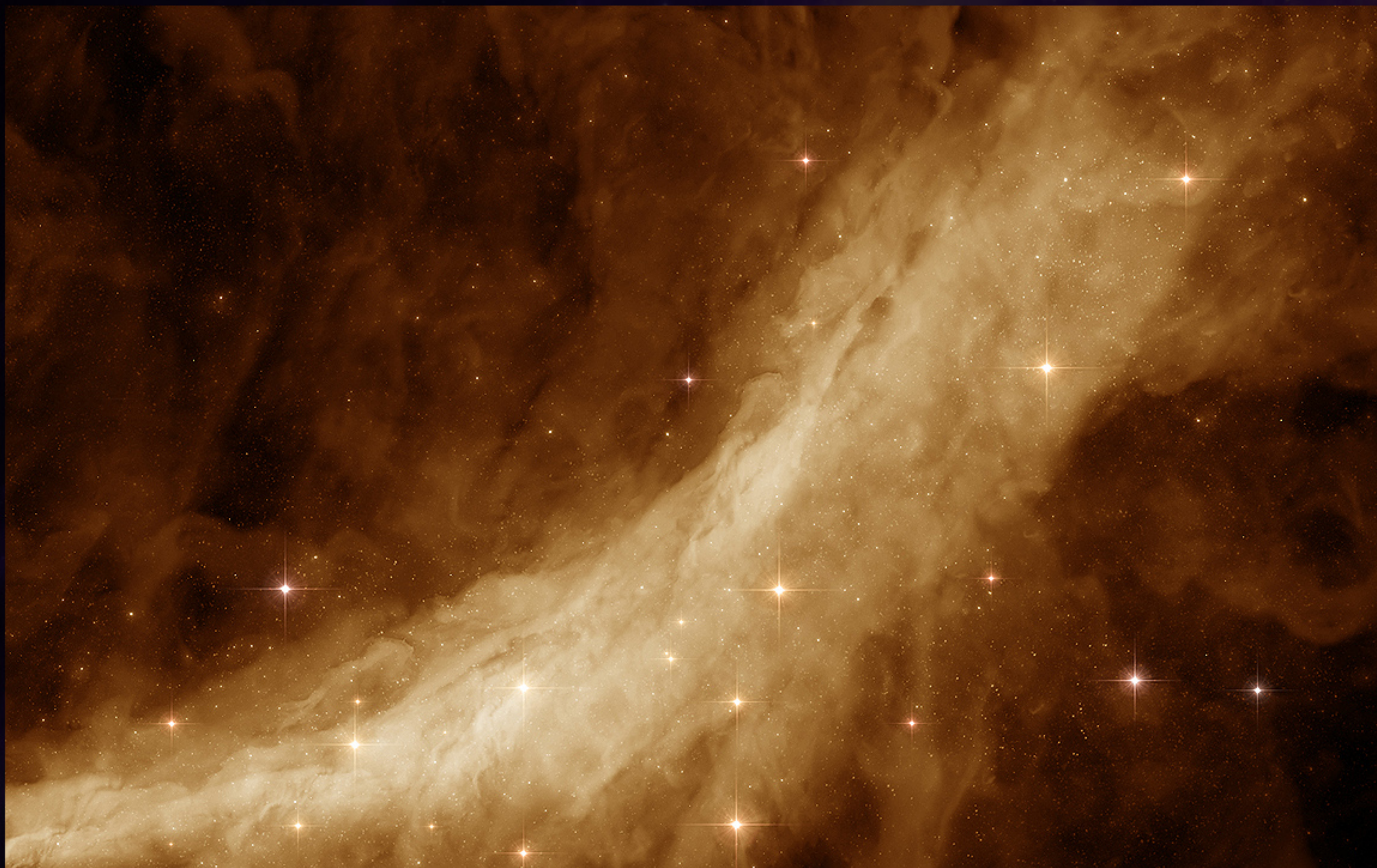
CHAPTER 2

EXAMPLES OF USING:



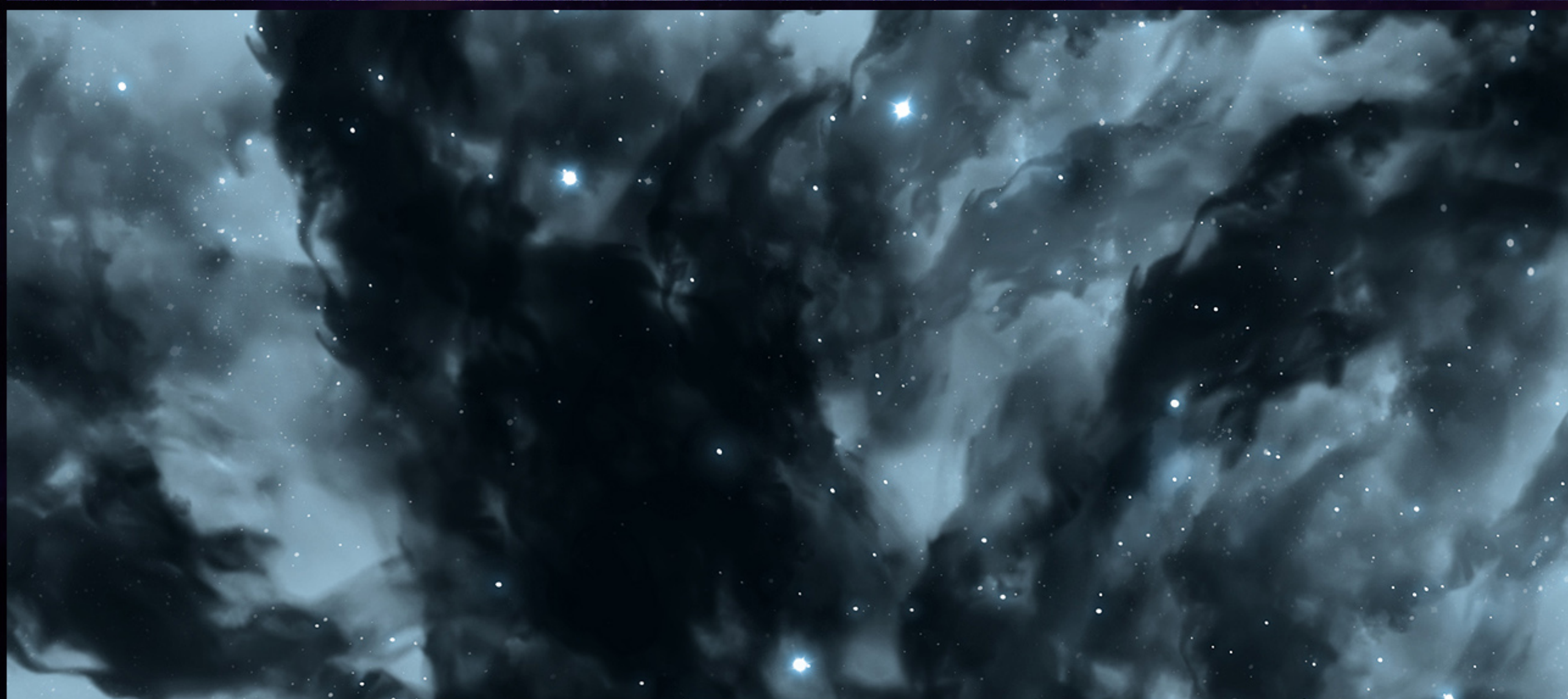
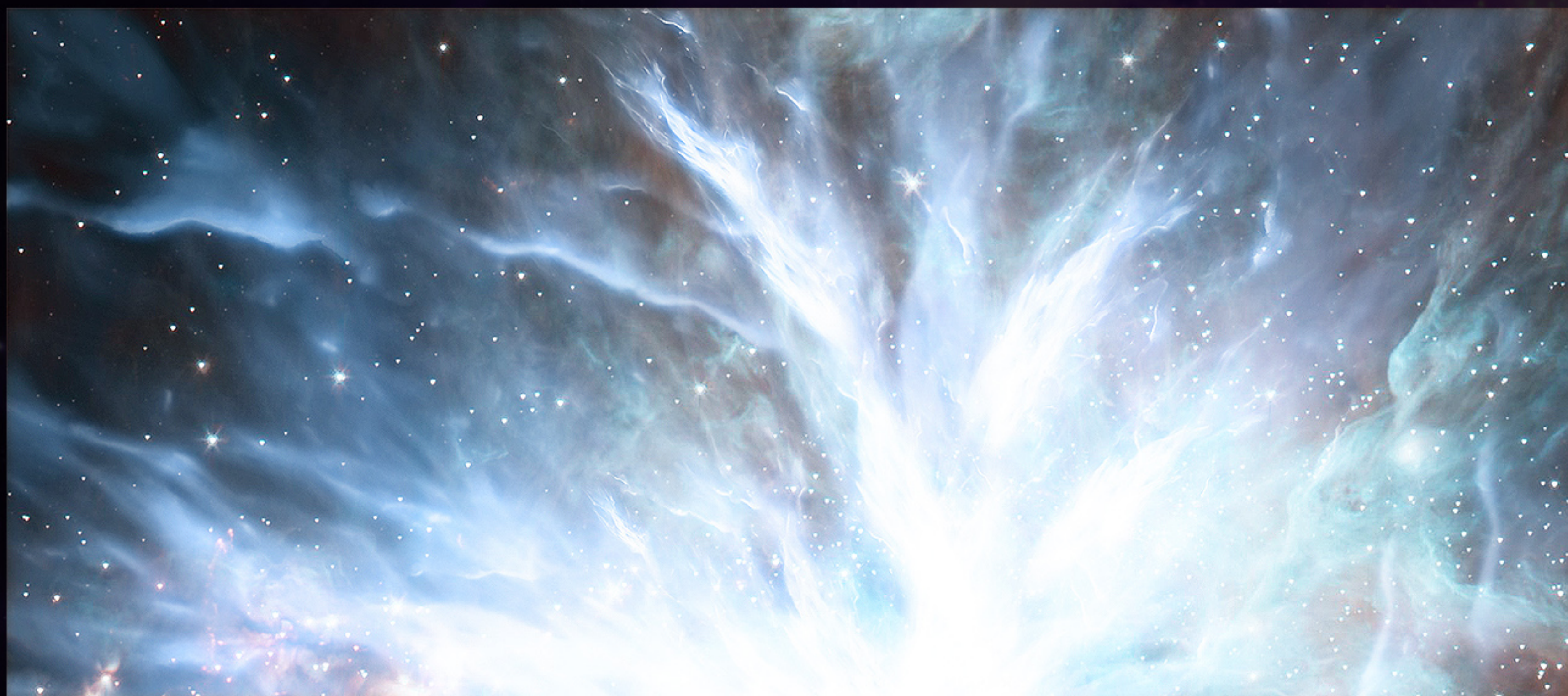
CHAPTER 2

EXAMPLES OF USING:



CHAPTER 2

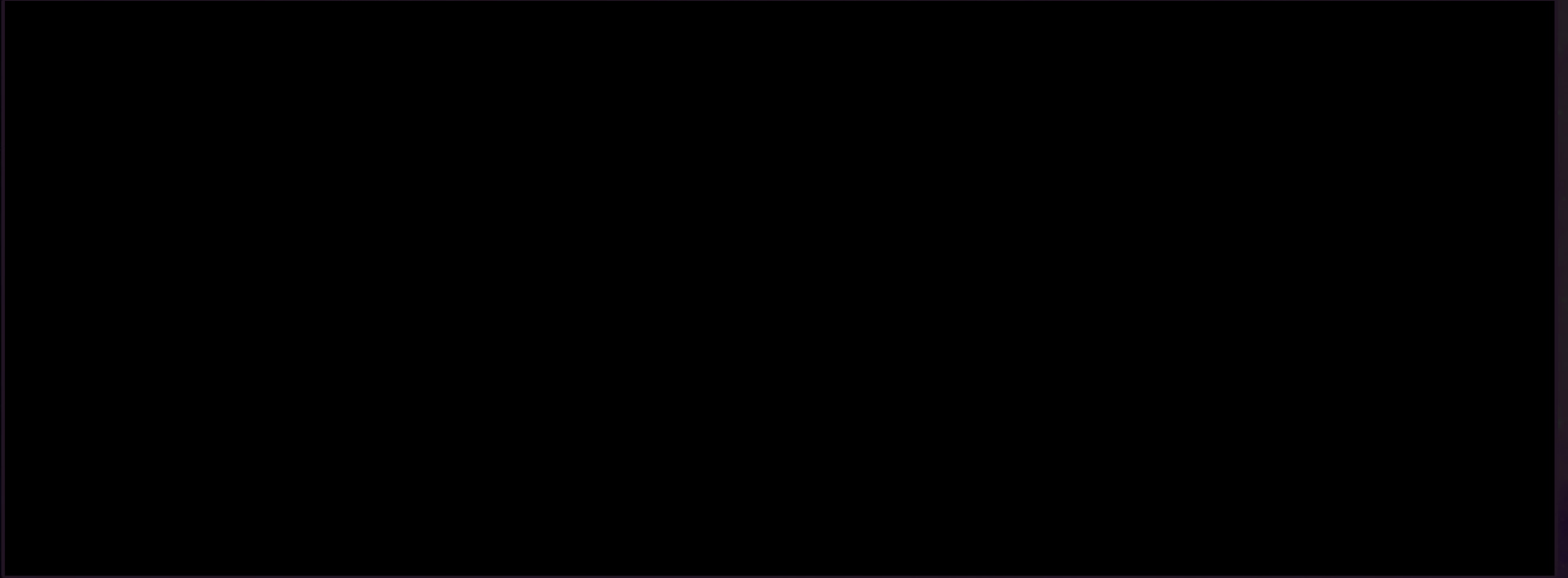
EXAMPLES OF USING:



CHAPTER 3

TUTORIALS:

1) SIMPLE NEBULA:



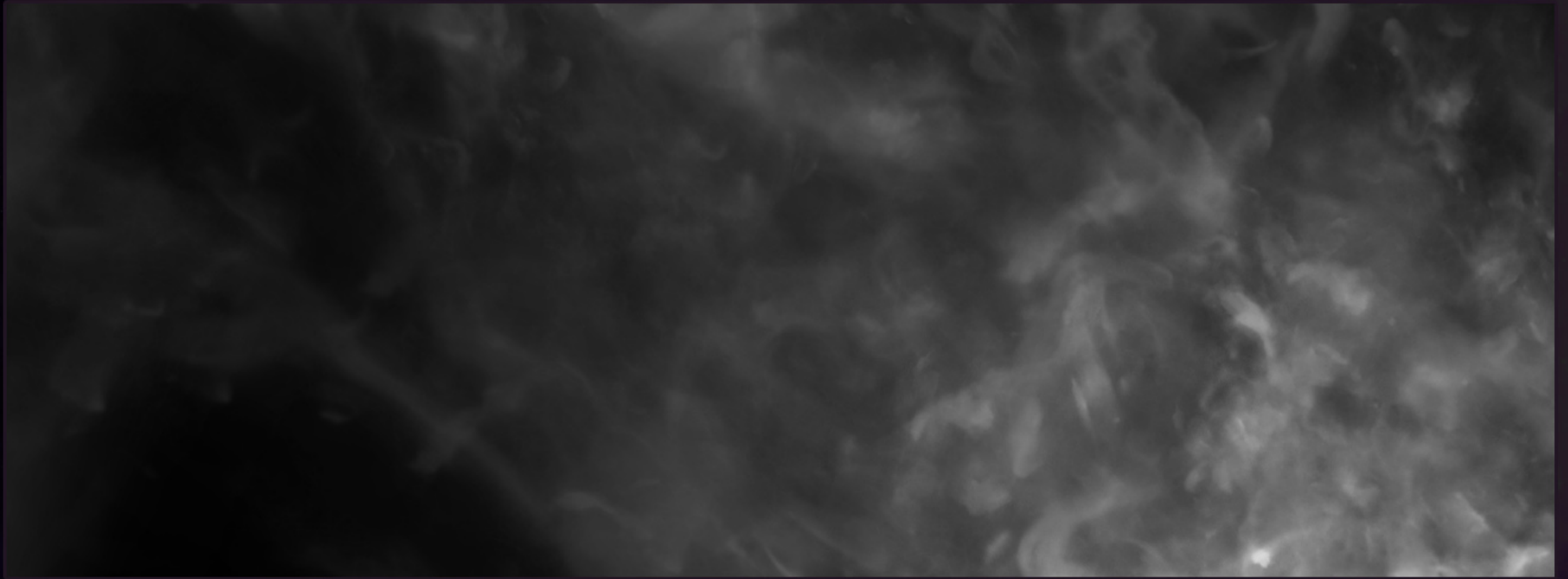
1. Create a new document with black background.
2. Create a new layer, choose the white color, Nebula Brush and opacity 10-20% (or any what you prefer more).



3. Draw your nebula.
4. Create a new layer. Choose Brush for Details.

CHAPTER 3

TUTORIALS:



5. Draw details with opacity 10-20%. You may combine different brushes with opacity up to 100% at your discretion.

6. Let's draw some stars. Create new layer and choose Star Brush. Color - white. Opacity - 100%. For distant stars about 10-20%.



7. That's it! In the next tutorial I will show you how to quick color your nebula.

CHAPTER 3

TUTORIALS:

2) HOW TO COLOR YOUR NEBULA:

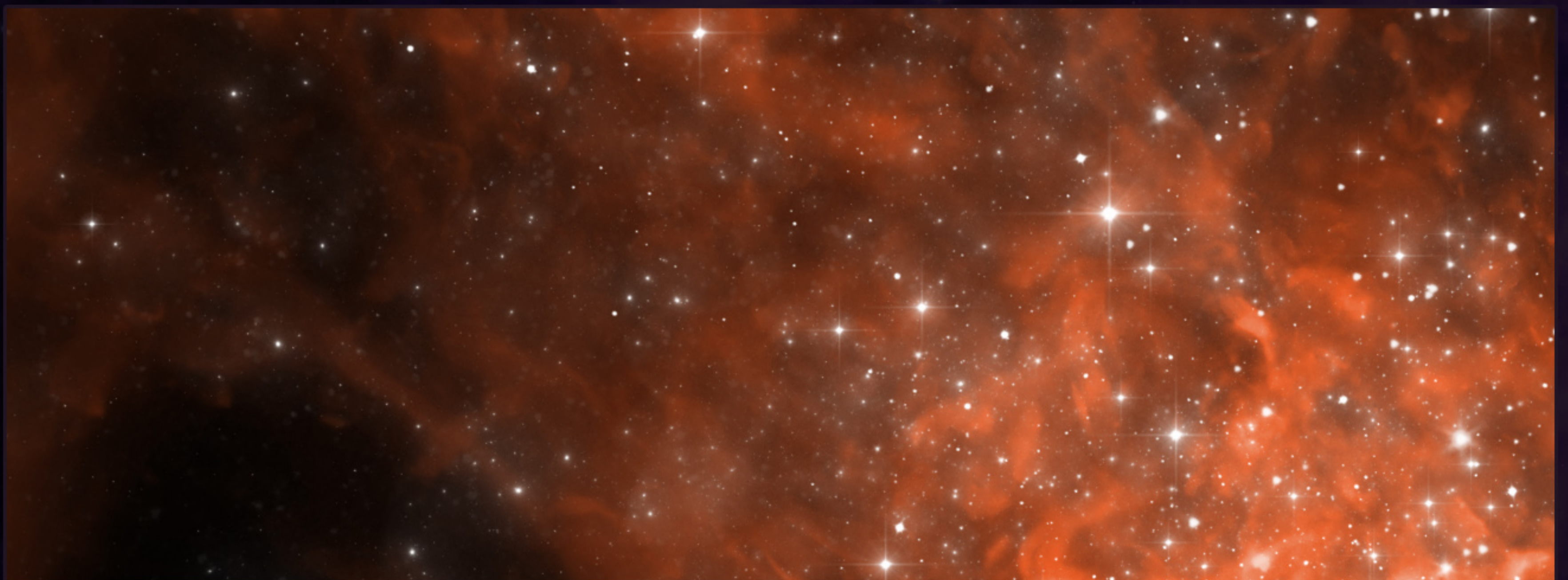


1. Merge layers with your nebula besides layers with stars (Ctrl+E).

2. Choose Image >> Adjustments >> Hue\Saturation (Ctrl+U).

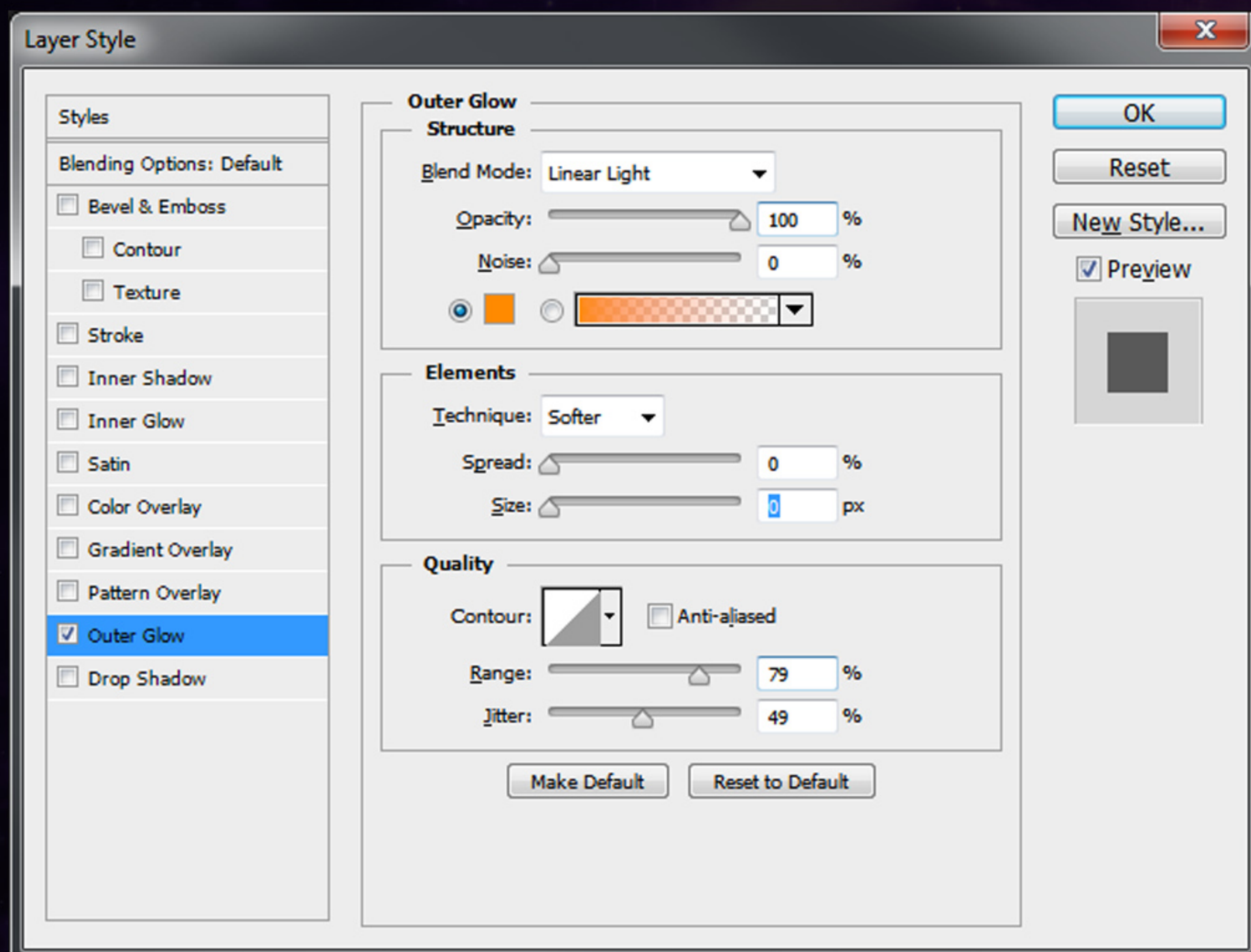
Turn on «Colorize».

3. Choose the colors which you prefer for your nebula.

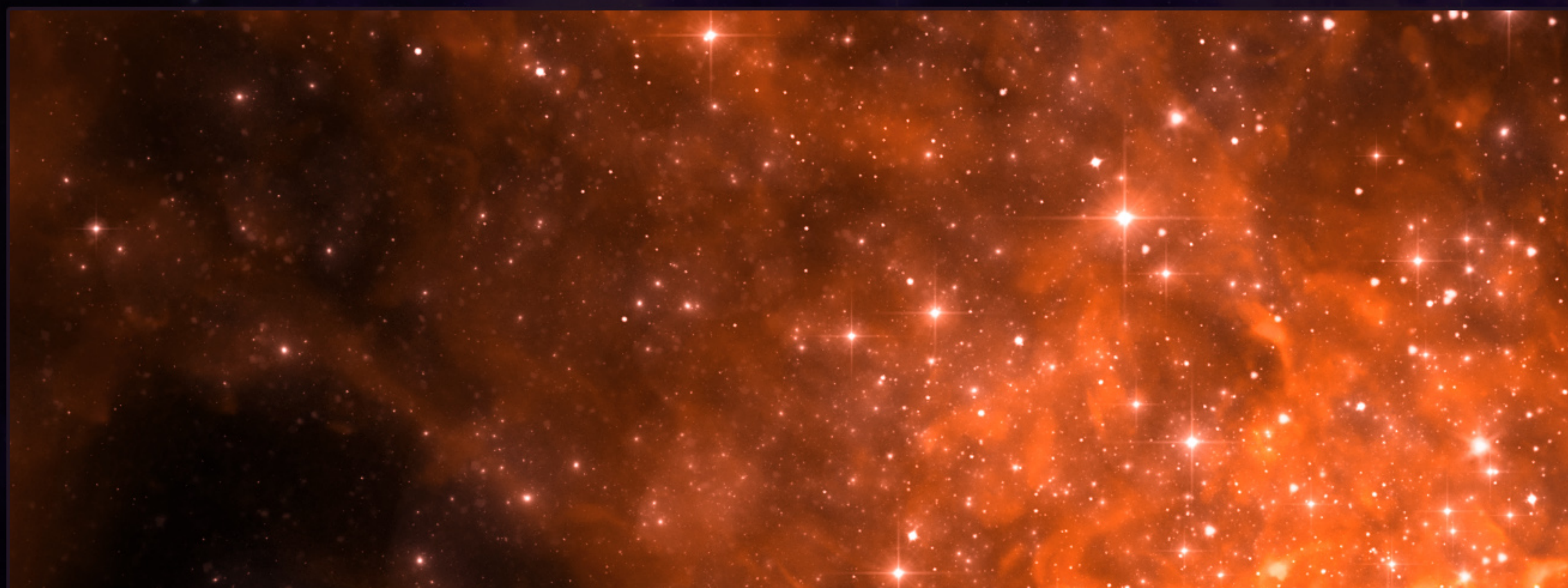


4. Go to layer with stars. Double click on it and open Layer Style. Choose the «Outer Glow».

Here is example of settings:



You may use your own and choose the color which you like the most.
Here is my result:

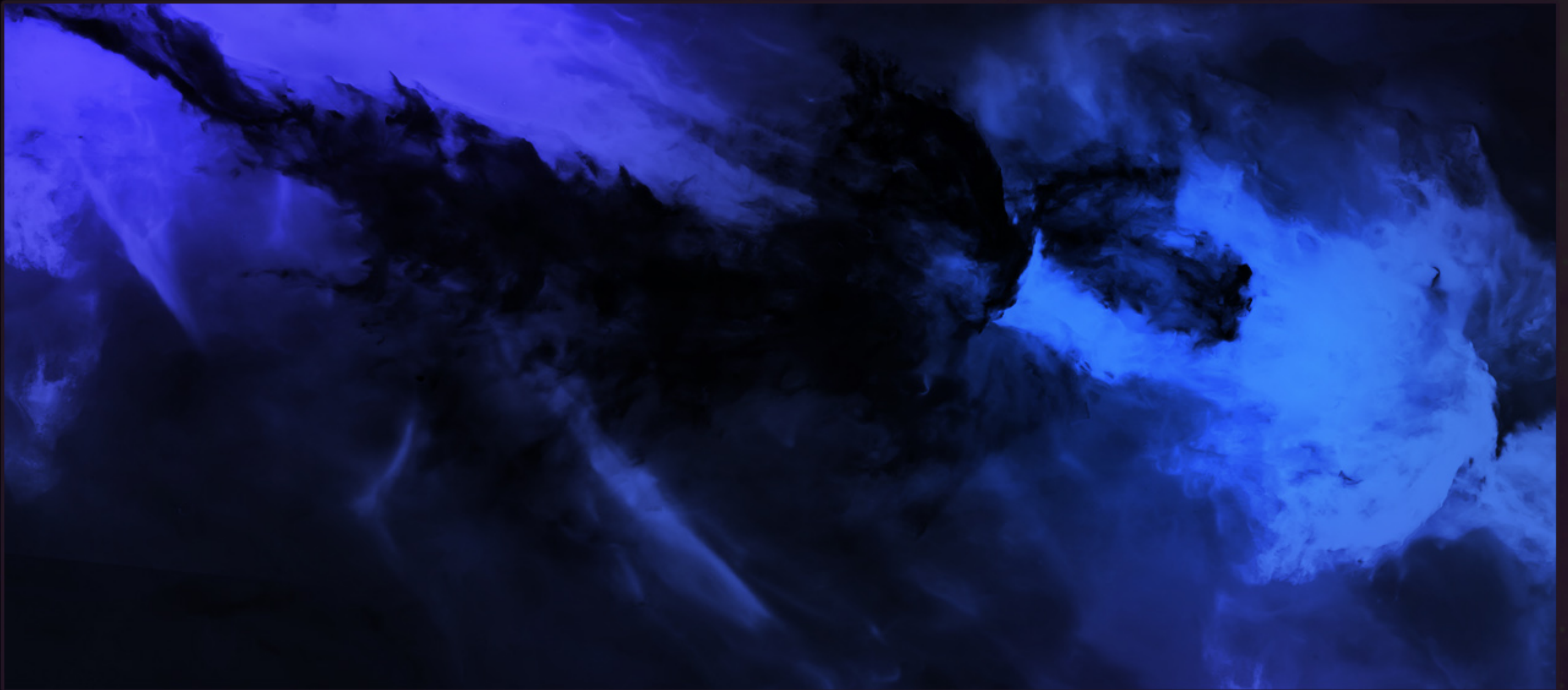


Experiment with the shape, combine the brushes, textures - use everything which will help you to reach the best result. In the next tutorial I will show you how to use Star Textures.

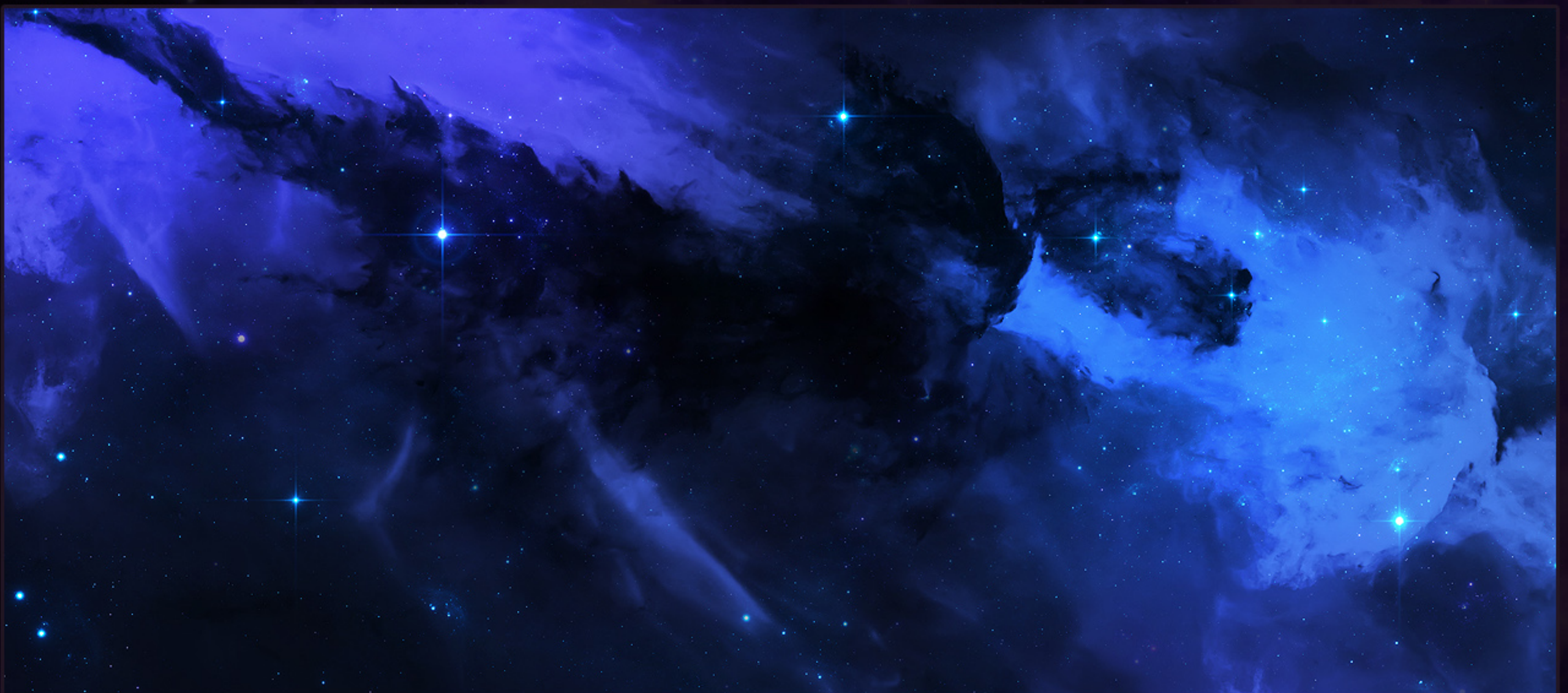
CHAPTER 3

TUTORIALS:

3) HOW TO USE STAR TEXTURES:



1. When you have a picture with base nebula you may create a new layer and add a Star Texture over your scene. I will use #12 and #13 from Pack.
2. After it change layer's mode to «Screen». Use Contrast settings and Eraser tool to make the stars in harmony with the scene. If you will need you may add additional textures or draw more stars by brushes.



3. This is my result. You may continue to working on the scene if you want. Right now it's perfect base for spaceships, planets or any other objects or even for characters.

Thank you so much for reading!
If you will have any questions you may always
contact me via Deviantart (in Notes) or e-mail:
|era-7.deviantart.com| |info@era7studios.com|

Now the whole universe in your hands. Explore, create and experiment! =)
Wish you every success, dear friend!