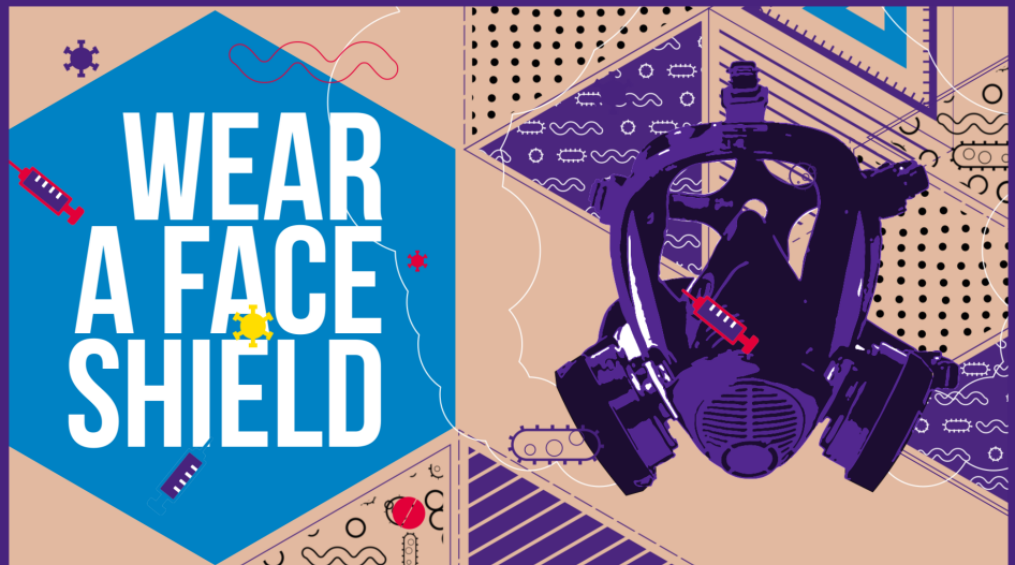


THANKS FOR PURCHASING THIS TEMPLATE

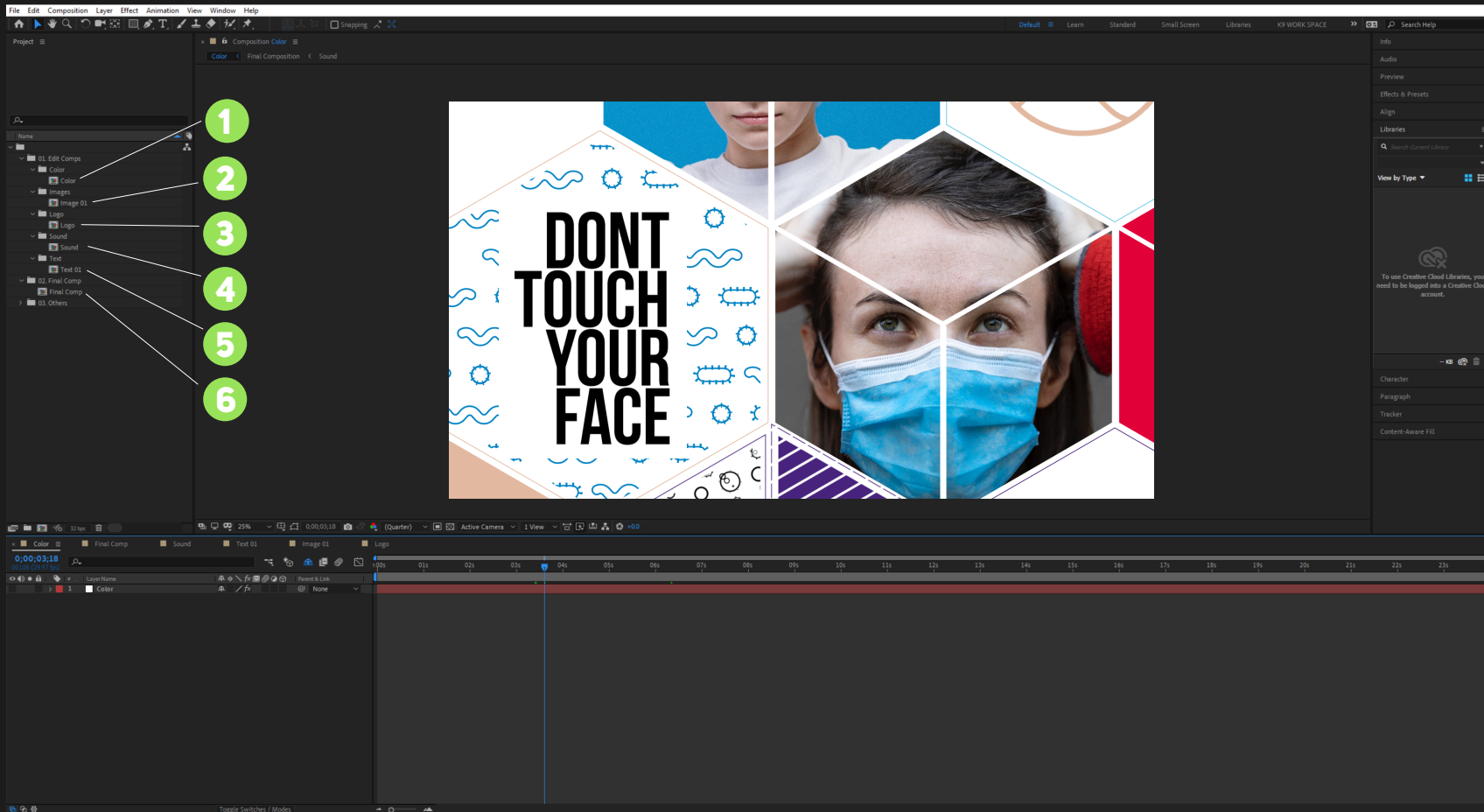
We hope you enjoy using it. This is a quick guide on how to use and customize this template to suit your needs.

01



TEMPLATE STRUCTURE

02



1.Colors....

Change your colors and other settings here

2.Change Images Here....

Place all your images into these Comps.

3.Logo....

Place your Logo into this comp.

4.Sound....

You should Only place the Audio file here if you Aquired the recomend sound.

5.Change Text Here....

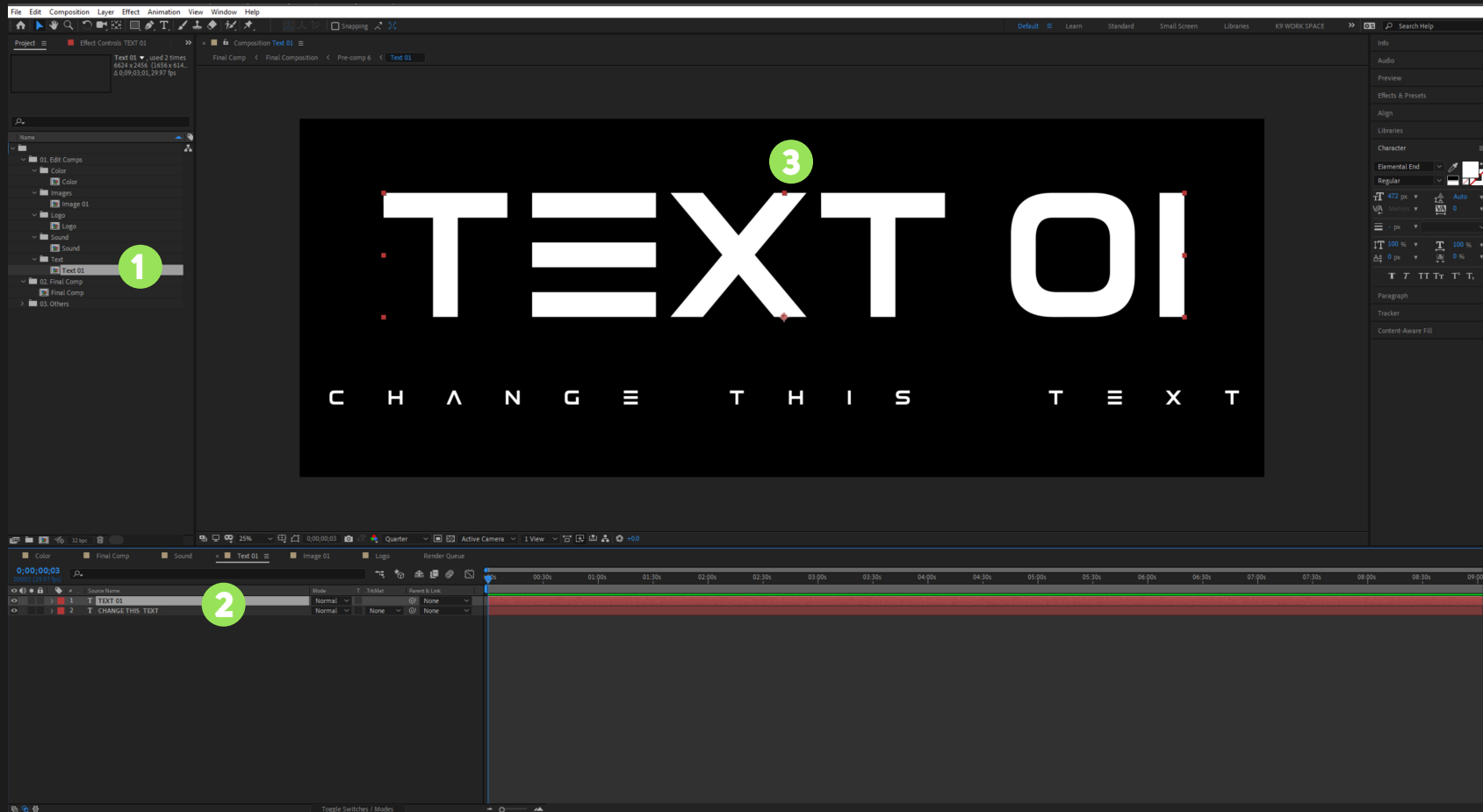
Change all the text in these Comps.

6.Render Final Comp Here....

Render your final project here after making all your edits.

HOW TO CHANGE THE TEXT

03



1.ENTER_HERE....

Double click to enter this text comp

2.EDIT ALL TEXT LAYERS....

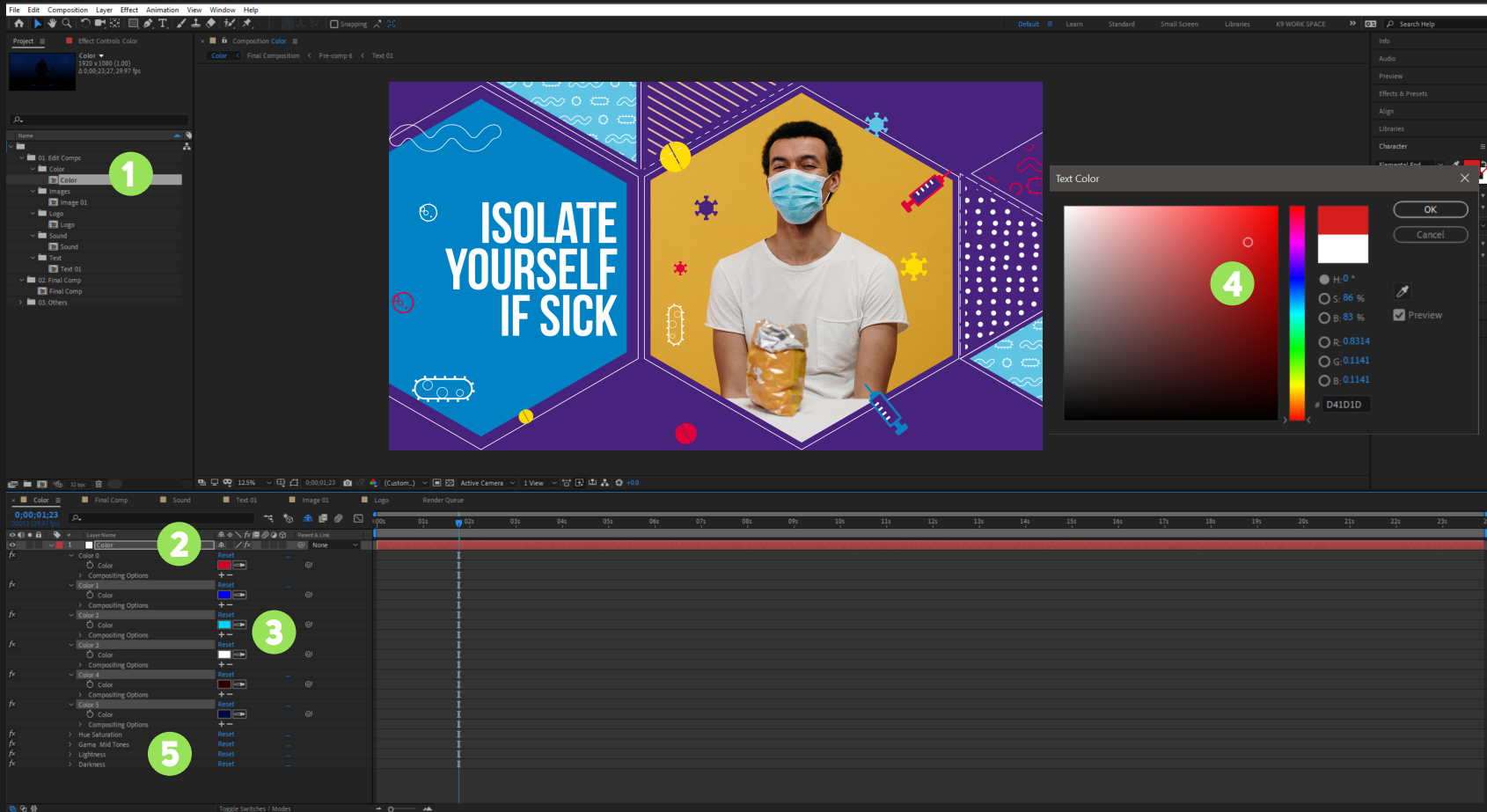
Double click each of the text layers in the timelines

3.TYPE YOUR TEXT HERE....

Replace each text with your own words.

HOW CHANGE COLORS AND CUSTOMIZE

04



1.ENTER_HERE....

Double click to enter this color comp

2.SELECT THIS LAYER....

click on the color control layer and press "e" on the keyboard

3.CLICK ON THE COLORS....

click on the various color swatches

4.CHANGE COLORS....

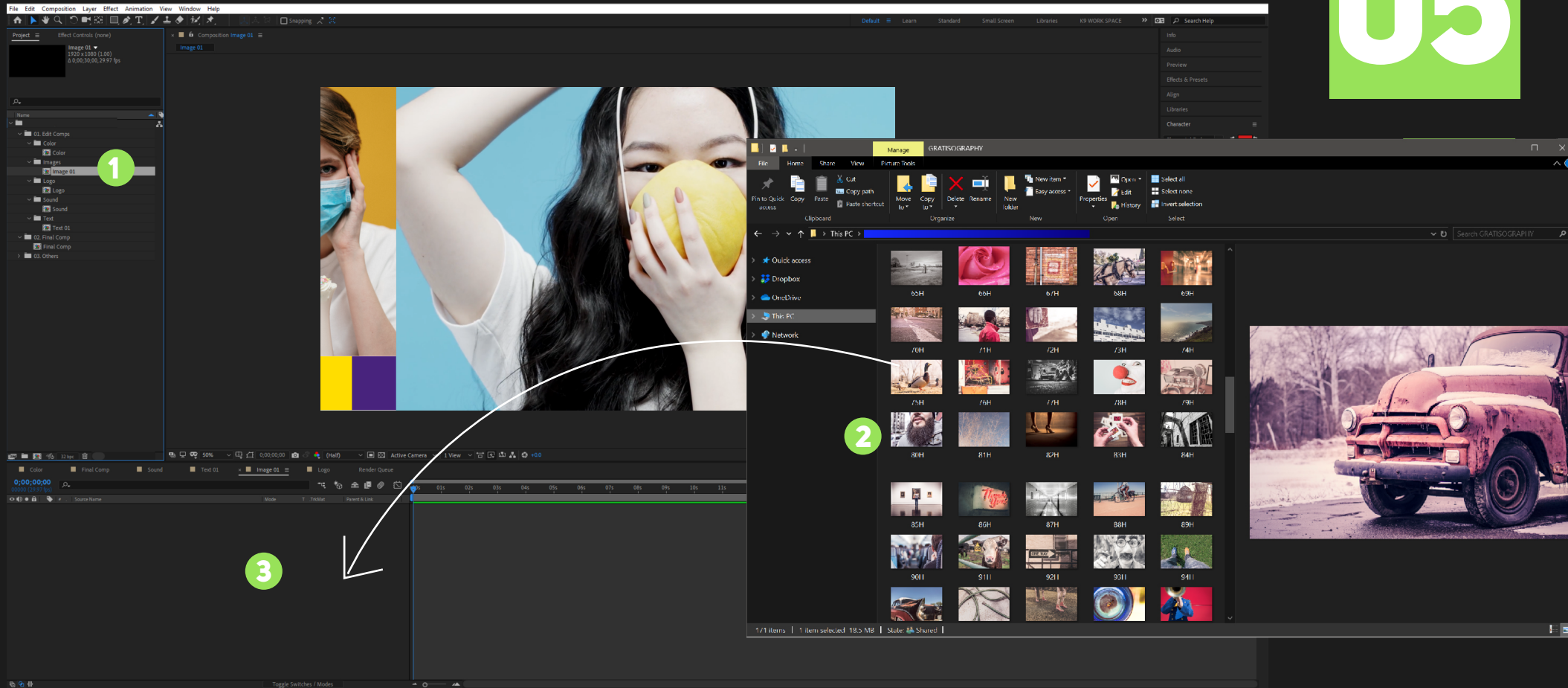
on the color window click and change all colors.

5.CUSTOMIZE TMPLATE....

Play around with the other settings to achieve a desirable look

HOW TO CHANGE THE IMAGE

05



1.ENTER_HERE....

Double click to enter the Image comp

3.Drag your Preferred IMAGE Here....

Drag and drop your preferred image into this comp.

2.Locate Images on your Computer....

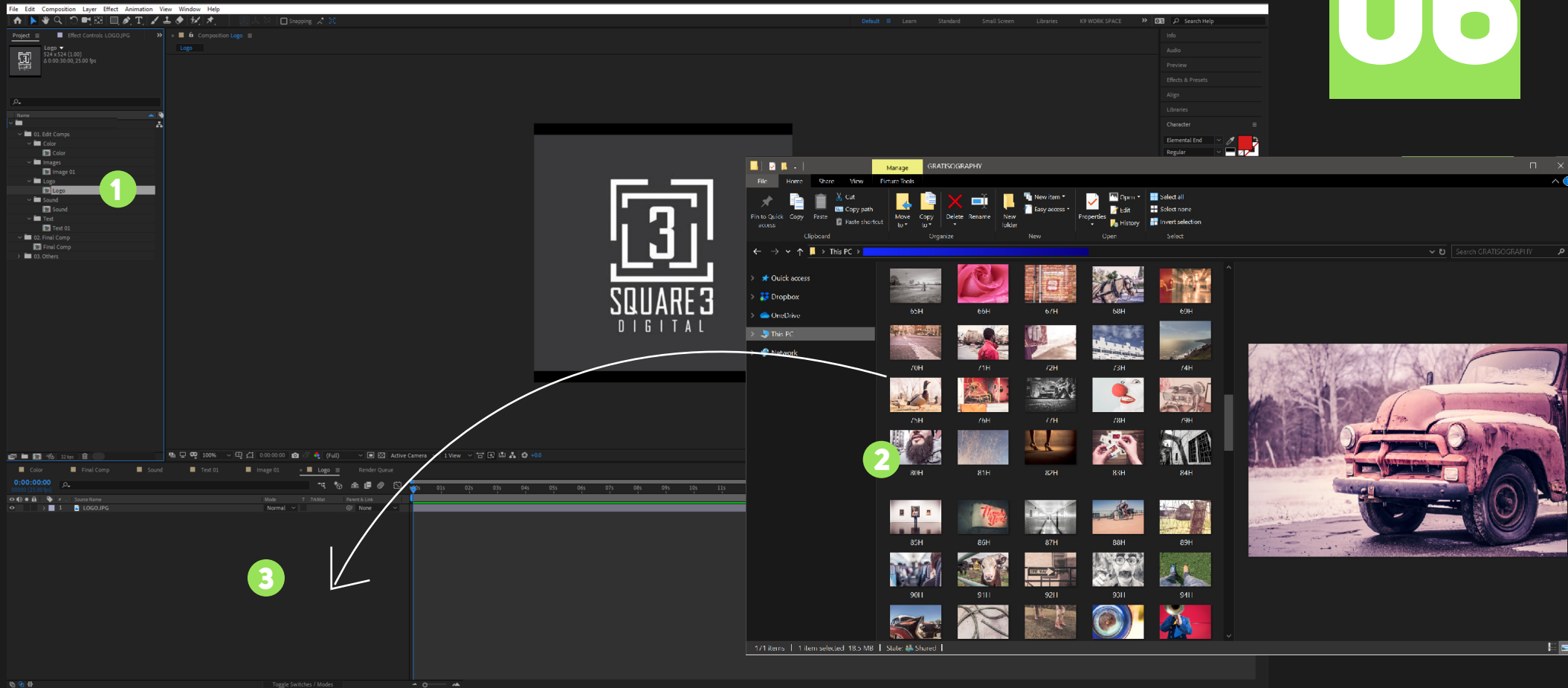
Browse to locate images on your computer

4.Repeat for all image place holders....

Repeat these steps till all mages have been replaced.

HOW TO CHANGE THE LOGO

06



1.ENTER_HERE....

Double click to enter the Logo comp

2.Locate your logo

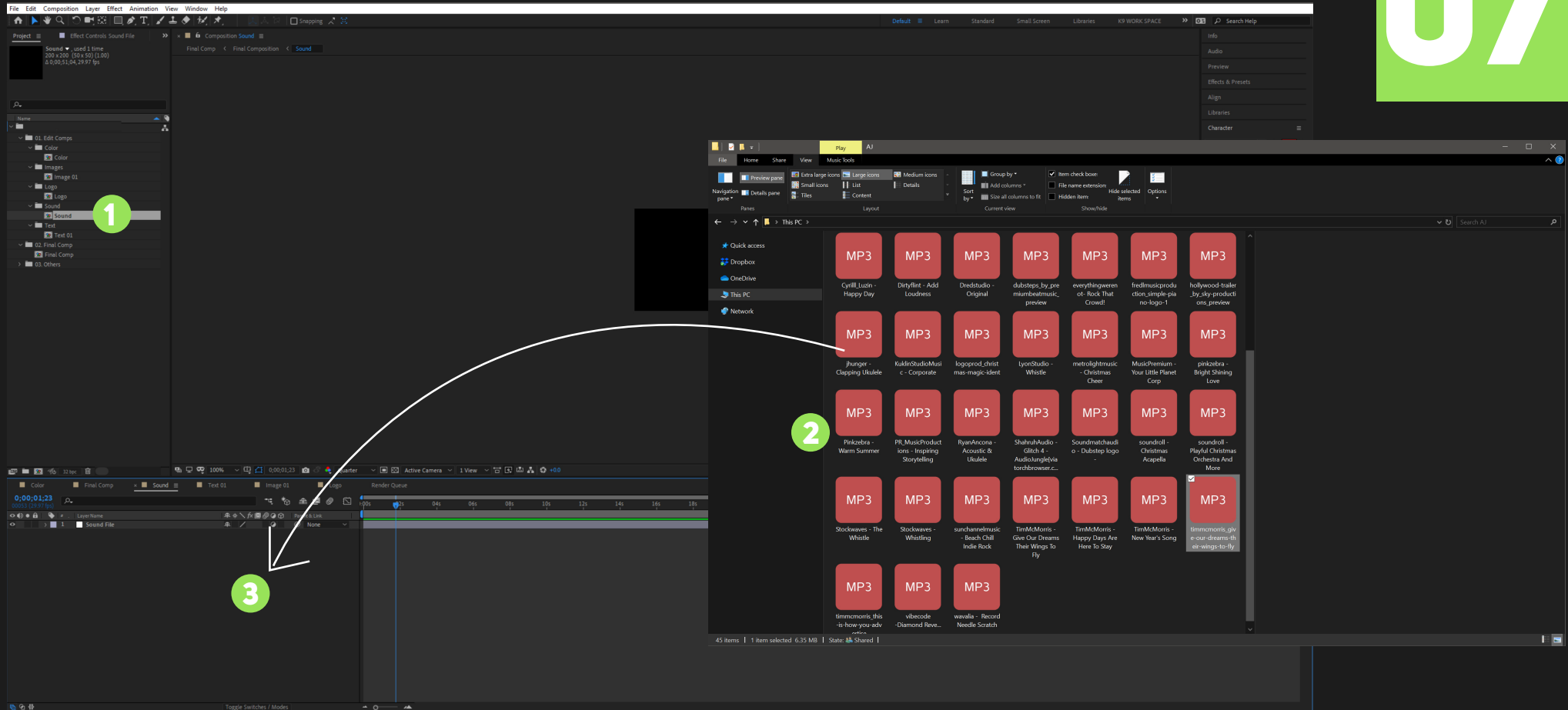
Browse to locate your logo on your computer

3.Drag your Logo Here....

Drag and drop your Logo into into this comp.

HOW TO PLACE IN THE RECOMENDED SOUND

07



1.ENTER_HERE....

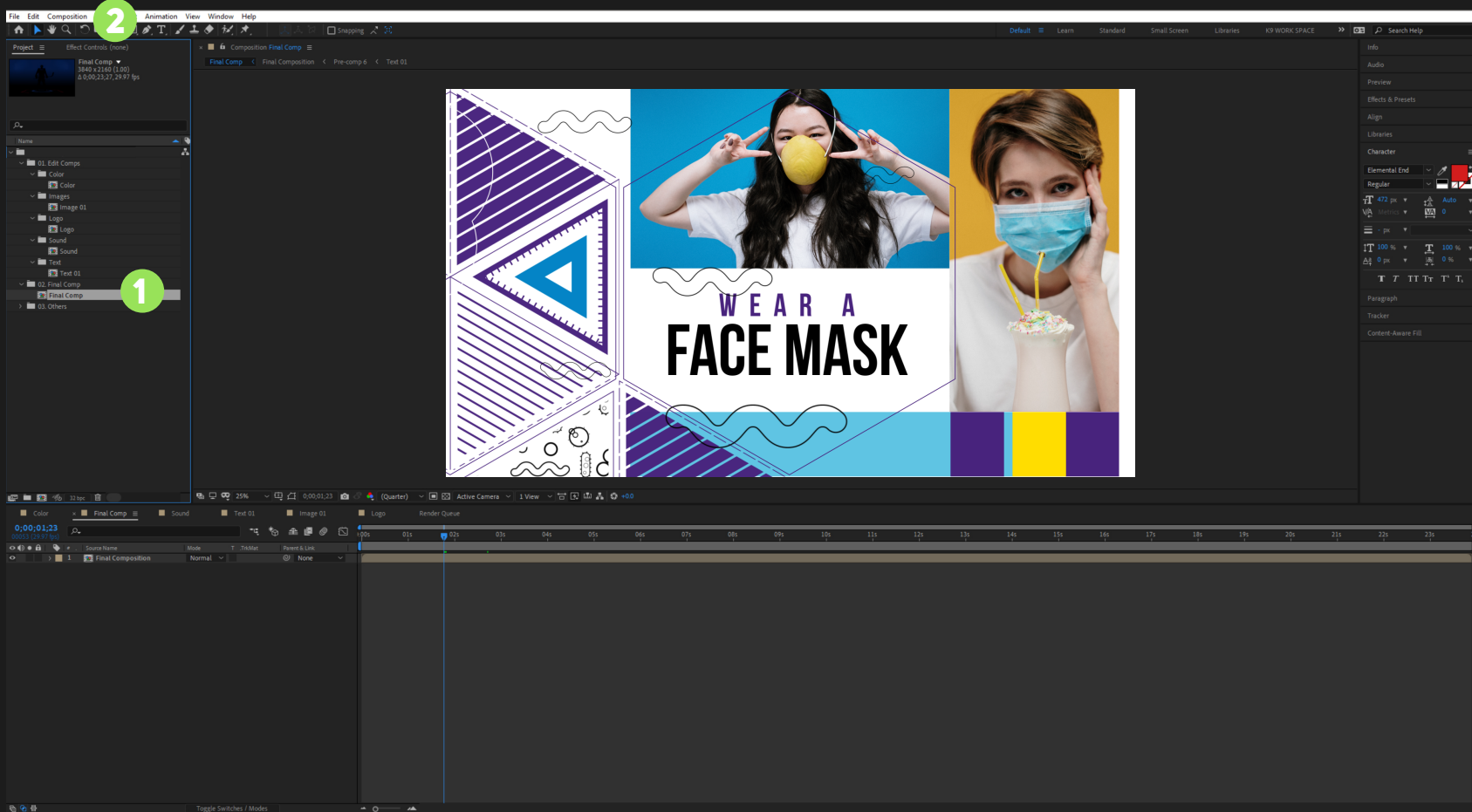
Double click to enter this Sound comp

2.Locate the purchased sound file....

Browse to locate the purchased Audio on your computer

3.Drag the sound Here....

Drag and drop the purchased Audio into this comp.

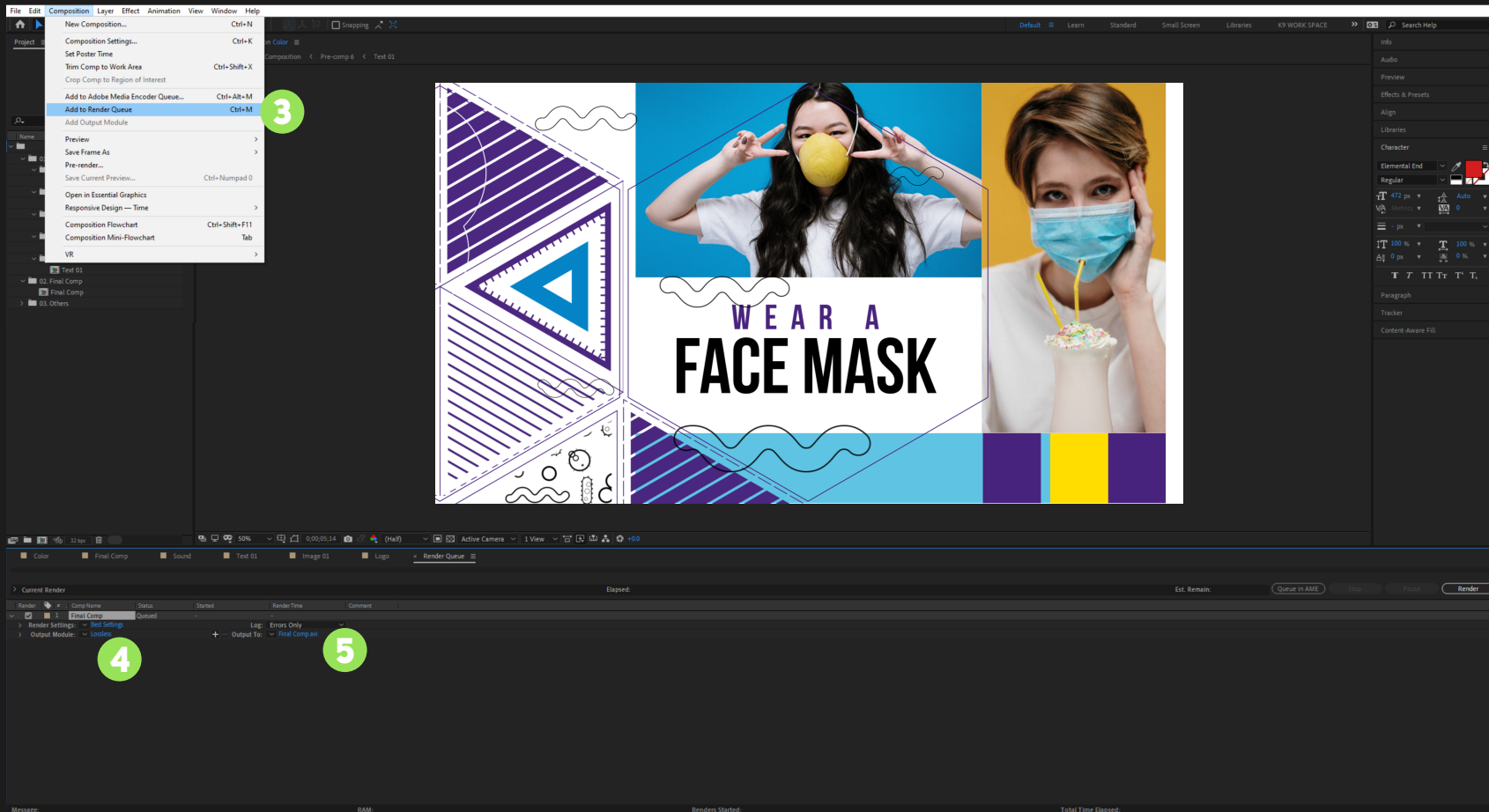


1.ENTER_HERE....

double click to enter the composition in this folder.

2.COMPOSITION MENU....

Navigate to the top menus and click the composition menu.



3.ADD TO RENDER QUEUE....
click on the add to render queue sub menu

5.OUTPUT TO....
Click here to set the folder path where the renderd video will be placed.

4.OUTPUT MODULE....
Click lossless to set your preffered file type for your final video.

6.RENDER....
When you are done with all your editing and setups, hit the Render button. and locate your final video int the folder path that you specified

ENJOY, THANKS

